

Beta-2-microglobulin Polyclonal Antibody(Capture/Detector)

catalog number: AN000620P



Note: Centrifuge before opening to ensure complete recovery of vial contents.

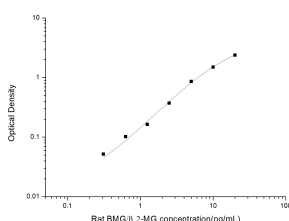
Description

Reactivity	Rat
Immunogen	Recombinant Rat Beta-2-microglobulin protein expressed by E.coli
Host	Rabbit
Isotype	Rabbit IgG
Purification	Antigen Affinity Purification
Conjugation	Unconjugated
buffer	Phosphate buffered solution, pH 7.2, containing 0.05% proclin 300.

Applications

Applications	Recommended Dilution
ELISA Capture	2-8 µg/mL
ELISA Detector	0.1-0.4 µg/mL

Data



Sandwich ELISA-Recombinant Rat Beta-2-microglobulin protein standard curve. Background subtracted standard curve using Beta-2-microglobulin antibody(AN000620P) (Capture), Beta-2-microglobulin antibody(AN000620P) (Detector) in sandwich ELISA. The reference range value for Recombinant Rat Beta-2-microglobulin protein is 0.31-20 ng/mL.

Preparation & Storage

Storage	Store at 4°C valid for 12 months or -20°C valid for long term storage, avoid freeze / thaw cycles.
Shipping	The product is shipped with ice pack, upon receipt, store it immediately at the temperature recommended.

Background

Beta-2-microglobulin (B2M) is a component of MHC class I molecules, which are present on the surface of nearly all nucleated cells. It can be found in body fluids under physiologic conditions as a result of shedding from cell surfaces or intracellular release. B2M has various biological functions, including antigen presentation. Investigations reveal that increased synthesis and release of B2M are present in several malignant diseases.

For Research Use Only

A Reliable Research Partner in Life Science and Medicine
Tel: 400-999-2100

Email: techsupport@elabscience.cn

Web: www.elabscience.cn

Rev. V1.5