

## KLC2 Polyclonal Antibody

**catalog number: E-AB-52993**

**Note:** Centrifuge before opening to ensure complete recovery of vial contents.

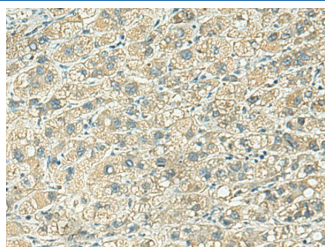
### Description

<b>Reactivity</b>	Human
<b>Immunogen</b>	Fusion protein of human KLC2
<b>Host</b>	Rabbit
<b>Isotype</b>	IgG
<b>Purification</b>	Antigen affinity purification
<b>Buffer</b>	Phosphate buffered solution, pH 7.4, containing 0.05% stabilizer and 50% glycerol.

### Applications Recommended Dilution

<b>IHC</b>	1:100-1:300
------------	-------------

### Data



Immunohistochemistry of paraffin-embedded Human liver cancer tissue using KLC2 Polyclonal Antibody at dilution of 1:100(×200)

### Preparation & Storage

<b>Storage</b>	Store at -20°C Valid for 12 months. Avoid freeze / thaw cycles.
<b>Shipping</b>	The product is shipped with ice pack, upon receipt, store it immediately at the temperature recommended.

### Background

The protein encoded by this gene is a light chain of kinesin, a molecular motor responsible for moving vesicles and organelles along microtubules. Defects in this gene are a cause of spastic paraplegia, optic atrophy, and neuropathy (SPOAN) syndrome.

### For Research Use Only