

# DPCD Polyclonal Antibody

catalog number: E-AB-19791

**Note:** Centrifuge before opening to ensure complete recovery of vial contents.

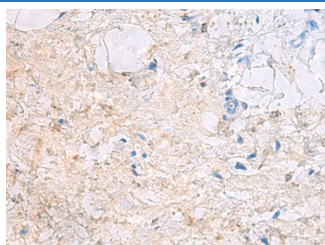
## Description

<b>Reactivity</b>	Human;Mouse;Rat
<b>Immunogen</b>	Synthetic peptide of human DPCD
<b>Host</b>	Rabbit
<b>Isotype</b>	IgG
<b>Purification</b>	Antigen affinity purification
<b>Conjugation</b>	Unconjugated
<b>buffer</b>	Phosphate buffered solution, pH 7.4, containing 0.05% stabilizer and 50% glycerol.

## Applications

<b>IHC</b>	1:50-1:100
------------	------------

## Data



Immunohistochemistry of paraffin-embedded Human gastric cancer tissue using DPCD Polyclonal Antibody at dilution of 1:50(×200)

## Preparation & Storage

<b>Storage</b>	Store at -20°C Valid for 12 months. Avoid freeze / thaw cycles.
<b>Shipping</b>	The product is shipped with ice pack, upon receipt, store it immediately at the temperature recommended.

## Background

This gene in mouse encodes a protein that may be involved in the generation and maintenance of ciliated cells. In mouse, expression of this gene increases during ciliated cell differentiation, and disruption of this gene has been linked to primary ciliary dyskinesia.

## For Research Use Only