

**Note:** Centrifuge before opening to ensure complete recovery of vial contents.

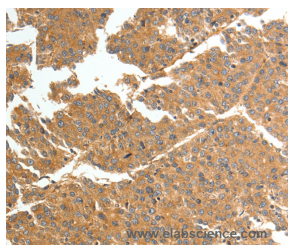
## Description

<b>Reactivity</b>	Human, Mouse
<b>Immunogen</b>	Synthetic peptide of human TNN
<b>Host</b>	Rabbit
<b>Isotype</b>	IgG
<b>Purification</b>	Affinity purification
<b>Conjugation</b>	Unconjugated
<b>Formulation</b>	PBS with 0.05% sodium azide and 50% glycerol, PH7.4

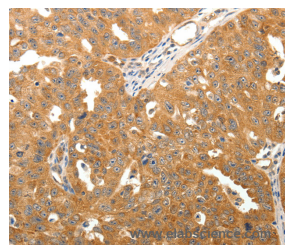
## Applications Recommended Dilution

<b>IHC</b>	1:50-1:200
------------	------------

## Data



Immunohistochemistry of paraffin-embedded Human liver cancer tissue using TNN Polyclonal Antibody at dilution 1:50



Immunohistochemistry of paraffin-embedded Human ovarian cancer tissue using TNN Polyclonal Antibody at dilution 1:50

## Preparation & Storage

**Storage** Store at -20°C. Avoid freeze / thaw cycles.

## Background

This protein is involved in neurite outgrowth and cell migration in hippocampal explants. It has three EGF-like domains, one fibrinogen C-terminal domain and nine fibronectin type III domains. Tenascins are extracellular matrix proteins present during the development of organisms as well as in pathological conditions. Tenascin-W, the fourth and last member of the tenascin family remains the least well-characterized one.

## For Research Use Only

A Reliable Research Partner in Life Science and Medicine

Toll-free: 1-888-852-8623

Web: [www.elabscience.com](http://www.elabscience.com)

Tel: 1-832-243-6086

Email: [techsupport@elabscience.com](mailto:techsupport@elabscience.com)

Fax: 1-832-243-6017