

NFS1 Polyclonal Antibody

Catalog Number: E-AB-53070



Note: Centrifuge before opening to ensure complete recovery of vial contents.

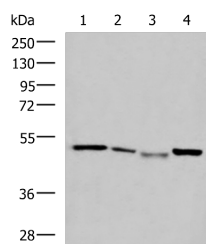
Description

Reactivity	Human, Mouse
Immunogen	Fusion protein of human NFS1
Host	Rabbit
Isotype	IgG
Purification	Antigen affinity purification
Conjugation	Unconjugated
Formulation	PBS with 0.05% NaN ₃ and 40% Glycerol, pH7.4

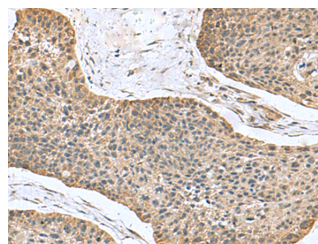
Applications Recommended Dilution

WB	1:1000-1:5000
IHC	1:100-1:200
ELISA	1:5000-1:10000

Data



Western blot analysis of HepG2 cell Hela cell Mouse kidney tissue K562 cell lysates using NFS1 Polyclonal Antibody at dilution of 1:800
Observed Mw: Refer to figures
Calculated Mw: 50 kDa



Immunohistochemistry of paraffin-embedded Human esophagus cancer tissue using NFS1 Polyclonal Antibody at dilution of 1:100 (×200)

Preparation & Storage

Storage Store at -20°C. Avoid freeze / thaw cycles.

Background

Iron-sulfur clusters are required for the function of many cellular enzymes. The proteins encoded by this gene supply inorganic sulfur to these clusters by removing the sulfur from cysteine, creating alanine in the process. This gene uses alternate in-frame translation initiation sites to generate mitochondrial forms and cytoplasmic/nuclear forms. Selection of the alternative initiation sites is determined by the cytosolic pH. The encoded proteins belong to the class-V family of pyridoxal phosphate-dependent aminotransferases. Alternatively spliced transcript variants have been described.

For Research Use Only

A Reliable Research Partner in Life Science and Medicine

Toll-free: 1-888-852-8623

Web: www.elabscience.com

Tel: 1-832-243-6086

Email: techsupport@elabscience.com

Fax: 1-832-243-6017