

# VASH2 Polyclonal Antibody

Catalog Number: E-AB-17250



**Note:** Centrifuge before opening to ensure complete recovery of vial contents.

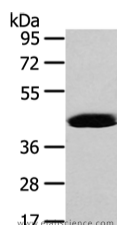
## Description

<b>Reactivity</b>	Human, Mouse
<b>Immunogen</b>	Full length fusion protein
<b>Host</b>	Rabbit
<b>Isotype</b>	IgG
<b>Purification</b>	Affinity purification
<b>Conjugation</b>	Unconjugated
<b>Formulation</b>	PBS with 0.05% sodium azide and 50% glycerol, PH7.4

## Applications Recommended Dilution

<b>WB</b>	1:500-2000
<b>ELISA</b>	1:2000-5000

## Data



Western Blot analysis of HeLa cell using VASH2 Polyclonal Antibody at dilution of 1/450  
**Calculated Mw: 40 kDa**

## Preparation & Storage

**Storage** Store at -20°C. Avoid freeze / thaw cycles.

## Background

Vasohibin-2, also known as VASH2, is a 355 amino acid protein belonging to the Vasohibin family. Expressed in various embryonic organs, Vasohibin-2 can be detected during embryonic weeks six through twelve and is found in vessels of 20-week embryonic organs as well as in endothelial cells of neonatal large vessels. Induced by VEGF, Vasohibin-2 is an angiogenesis inhibitor and interferes with the proliferation, migration and network formation by endothelial cells.

## For Research Use Only

A Reliable Research Partner in Life Science and Medicine

Toll-free: 1-888-852-8623

Web: [www.elabscience.com](http://www.elabscience.com)

Tel: 1-832-243-6086

Email: [techsupport@elabscience.com](mailto:techsupport@elabscience.com)

Fax: 1-832-243-6017