

CSMD1 Polyclonal Antibody

catalog number: E-AB-13174

Note: Centrifuge before opening to ensure complete recovery of vial contents.

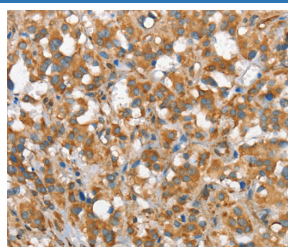
Description

Reactivity	Human;Mouse
Immunogen	Synthetic peptide of human CSMD1
Host	Rabbit
Isotype	IgG
Purification	Affinity purification
Buffer	Phosphate buffered solution, pH 7.4, containing 0.05% stabilizer and 50% glycerol.

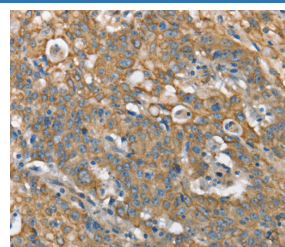
Applications Recommended Dilution

IHC	1:50-1:200
------------	------------

Data



1:40



1:40

Immunohistochemistry of paraffin-embedded Human thyroid cancer tissue using CSMD1 Polyclonal Antibody at dilution 1:40 Immunohistochemistry of paraffin-embedded Human gastric cancer tissue using CSMD1 Polyclonal Antibody at dilution 1:40

Preparation & Storage

Storage	Store at -20°C Valid for 12 months. Avoid freeze / thaw cycles.
Shipping	The product is shipped with ice pack, upon receipt, store it immediately at the temperature recommended.

Background

CSMD1 CUB and Sushi multiple domains 1 is a protein that in humans is encoded by the CSMD1 gene. It is a potential tumour suppressor, the deletion of which Human, Mouse may result in head and neck carcinomas behaving more aggressively. CSMD1 is part of the complement system that defends against pathogens through either the classical pathway or the alternative pathway. Located primarily in nerve growth cones, CSMD1 blocks the classical pathway of the immune system and is thought to be involved in tumor suppression, as defects in the gene encoding CSMD1 are associated with squamous cell carcinomas.

For Research Use Only