

RAB42 Polyclonal Antibody

catalog number: E-AB-40535

Note: Centrifuge before opening to ensure complete recovery of vial contents.

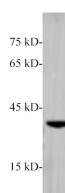
Description

Reactivity	Human;Mouse
Immunogen	Synthetic peptide corresponding to RAB42 conjugated to keyhole limpet haemocyanin.
Host	Rabbit
Isotype	IgG
Purification	Antigen Affinity Purification
Buffer	PBS with 0.05% Proclin300, 1% protective protein and 50% glycerol, pH7.4

Applications Recommended Dilution

WB	1:1000-2000
-----------	-------------

Data



Western blot of mouse brain lysates with anti-RAB42 polyclonal antibody at dilution of 1:1000.

Observed-MW:30 kDa

Calculated-MW:22 kDa

Preparation & Storage

Storage	Store at -20°C Valid for 12 months. Avoid freeze / thaw cycles.
Shipping	The product is shipped with ice pack, upon receipt, store it immediately at the temperature recommended.

Background

RAB42 (RAB42, Member RAS Oncogene Family) is a Protein Coding gene. Among its related pathways are Metabolism of proteins and RAB geranylgeranylation. Gene Ontology (GO) annotations related to this gene include GTP binding and GTPase activity

For Research Use Only