

## Purified Anti-Human CD14 Antibody[1B10]

Catalog Number: GF002130P

**Note:** Centrifuge before opening to ensure complete recovery of vial contents.

### Description

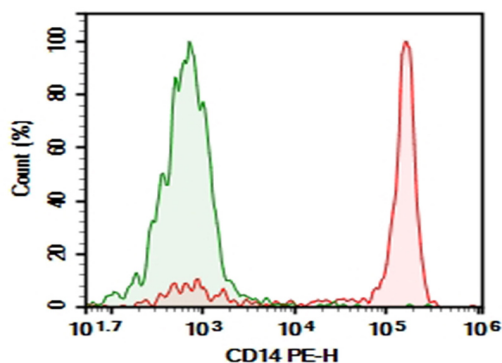
Reactivity	Human
Immunogen	Recombinant Human CD14 protein
Host	Rat
Isotype	Rat IgG1, $\kappa$
Clone	1B10
Purification	>98%, Protein A/G purified
Conjugation	Unconjugated
Buffer	Phosphate-buffered solution, pH 7.2, containing 0.05% non-protein stabilizer. Dialyze to completely remove the stabilizer prior to labeling.

### Applications

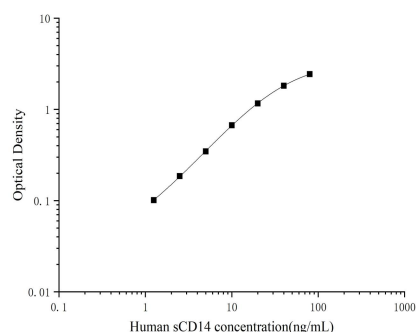
### Recommended Dilution

FCM	2 $\mu\text{g/mL}$ ( $0.5 \times 10^6$ - $1 \times 10^6$ cells)
-----	---

### Data



Human peripheral blood monocytes were stained with 0.2  $\mu\text{g}$  Purified Anti-Human CD14 Antibody[1B10] (Right) and 0.2  $\mu\text{g}$  Rat IgG1,  $\kappa$  Isotype Control (Left), followed by PE-conjugated Goat Anti-Rat IgG Secondary Antibody.



Sandwich ELISA-Recombinant Human sCD14 protein standard curve. Background subtracted standard curve using sCD14 antibody (AN002120P) (Capture), sCD14 antibody (AN002130P) (Detector) in sandwich ELISA. The reference range value for Recombinant Human sCD14 protein is 1.25-80 ng/mL.

### Preparation & Storage

Storage	Store at 4°C valid for 12 months or -20°C valid for long term storage, avoid freeze / thaw cycles.
Shipping	Ice bag

### Background

The cluster of differentiation (CD) system is commonly used as cell markers in immunophenotyping. Different kinds of cells in the immune system can be identified through the surface CD molecules associating with the immune function of the cell. There are more than 320 CD unique clusters and subclusters have been identified. Some of the CD molecules serve as receptors or ligands important to the cell through initiating a signal cascade which then alter the behavior of the cell. Some CD proteins do not take part in cell signal process but have other functions such as cell adhesion. Cluster of differentiation 14 (CD14) is a member of the CD system. It takes its name from its inclusion in the CD molecule surface marker proteins. CD14 exists in two forms: a form anchored into the membrane or a soluble form. CD14 was found expressed in macrophages, neutrophil granulocyte and dendritic cells. The major function is to serve as a co-receptor (along with TLR4 and MD-2) for the bacterial lipopolysaccharide (LPS) and other pathogen-associated molecular patterns.