

PAK1 Antibody Polyclonal Antibody

catalog number: AN100003P

Note: Centrifuge before opening to ensure complete recovery of vial contents.

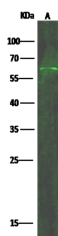
Description

Reactivity	Human
Immunogen	A synthetic peptide corresponding to the center region of the human PAK1
Host	Rabbit
Isotype	IgG
Purification	Protein A & Antigen Affinity
Buffer	0.2 µm filtered solution in PBS

Applications Recommended Dilution

WB	1:500-1:1000
-----------	--------------

Data



Western Blot with PAK1 Antibody Polyclonal Antibody at dilution of 1:500. Lane A: A431 Whole Cell Lysate, Lysates/proteins at 30 µg per lane.

Observed-MW:61 kDa

Calculated-MW:61 kDa

Preparation & Storage

Storage This antibody can be stored at 2°C-8°C for one month without detectable loss of activity. Antibody products are stable for twelve months from date of receipt when stored at -20°C to -80°C. Preservative-Free. Avoid repeated freeze-thaw cycles.

Shipping Ice bag

Background

This gene encodes a family member of serine/threonine p21-activating kinases, known as PAK proteins. These proteins are critical effectors that link RhoGTPases to cytoskeleton reorganization and nuclear signaling, and they serve as targets for the small GTP binding proteins Cdc39 and Rac. This specific family member regulates cell motility and morphology. Alternatively spliced transcript variants encoding different isoforms have been found for this gene.

For Research Use Only