

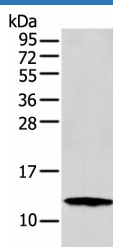
S100A16 Polyclonal Antibody

catalog number: E-AB-52266

Note: Centrifuge before opening to ensure complete recovery of vial contents.

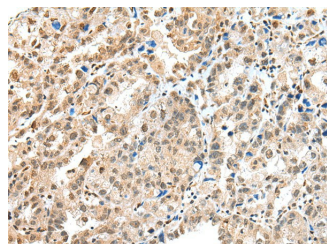
Description	
Reactivity	Human
Immunogen	Full length fusion protein
Host	Rabbit
Isotype	IgG
Purification	Antigen affinity purification
Conjugation	Unconjugated
Buffer	Phosphate buffered solution, pH 7.4, containing 0.05% stabilizer and 50% glycerol.
Applications	Recommended Dilution
WB	1:500-1:2000
IHC	1:25-1:100

Data

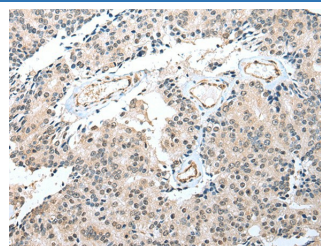


Western blot analysis of MCF-7 cell using S100A16 Polyclonal Antibody at dilution of 1:300

Observed-MV:Refer to figures
Calculated-MV:12 kDa



Immunohistochemistry of paraffin-embedded Human ovarian cancer tissue using S100A16 Polyclonal Antibody at dilution of 1:25(×200)



Immunohistochemistry of paraffin-embedded Human prostate cancer tissue using S100A16 Polyclonal Antibody at dilution of 1:25(×200)

Preparation & Storage

Storage	Store at -20°C Valid for 12 months. Avoid freeze / thaw cycles.
Shipping	The product is shipped with ice pack, upon receipt, store it immediately at the temperature recommended.

Background

S100A16 (S100 Calcium Binding Protein A16) is a Protein Coding gene. Diseases associated with S100A16 include Robinow Syndrome, Autosomal Recessive and Robinow Syndrome. Gene Ontology (GO) annotations related to this gene include protein homodimerization activity.

For Research Use Only