

# Purified Anti-Mouse CD3 $\epsilon$ Antibody[145-2C11]

catalog number: E-AB-F1103A

**Note:** Centrifuge before opening to ensure complete recovery of vial contents.

## Description

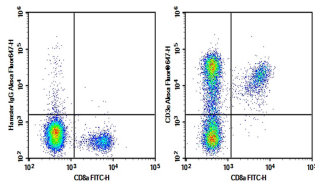
<b>Reactivity</b>	Mouse
<b>Immunogen</b>	Recombinant Mouse CD3 $\epsilon$ protein
<b>Host</b>	Armenian Hamster
<b>Isotype</b>	Armenian Hamster IgG
<b>Clone</b>	145-2C11
<b>Purification</b>	>98%, Protein A/G purified
<b>Conjugation</b>	Unconjugated
<b>buffer</b>	PBS, pH 7.2. Contains 0.05% proclin 300.

## Applications

## Recommended Dilution

<b>FCM</b>	2 $\mu$ g/mL ( $1 \times 10^5$ - $5 \times 10^5$ cells)
------------	---

## Data



C57/BL6 Mouse splenocytes were stained with 0.2  $\mu$ g Purified Anti-Mouse CD3 $\epsilon$  Antibody[145-2C11](Right) and 0.2  $\mu$ g Armenian Hamster IgG,  $\kappa$  Isotype Control(Left),

followed by Alexa Fluor<sup>®</sup> 647-conjugated Goat Anti-Armenian Hamster IgG Secondary Antibody, then anti-Mouse CD8a FITC-conjugated Monoclonal Antibody.

## Preparation & Storage

<b>Storage</b>	Store at 4°C valid for 12 months or -20°C valid for long term storage, avoid freeze / thaw cycles.
<b>Shipping</b>	Ice bag

## Background

CD3 $\epsilon$  is a 20 kD transmembrane protein, also known as CD3 or T3. It is a member of the Ig superfamily and primarily expressed on T cells, NK-T cells, and at different levels on thymocytes during T cell differentiation. CD3 $\epsilon$  forms a TCR complex by associating with the CD3 $\delta$ ,  $\gamma$  and  $\zeta$  chains, as well as the TCR  $\alpha/\beta$  or  $\gamma/\delta$  chains. CD3 plays a critical role in TCR signal transduction, T cell activation, and antigen recognition by binding the peptide/MHC antigen complex.

## For Research Use Only