

Recombinant Human CCL3L1 Protein (His Tag)

Catalog Number:PKSH032198



Note: Centrifuge before opening to ensure complete recovery of vial contents.

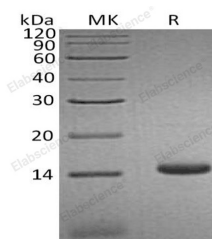
Description

Synonyms	C-C Motif Chemokine 3-Like 1;G0/G1 Switch Regulatory Protein 19-2;LD78-Beta(1-70);PAT 464.2;Small-Inducible Cytokine A3-Like 1;Tonsillar Lymphocyte LD78 Beta Protein;CCL3L1;D17S1718;G0S19-2;SCYA3L1;CCL3L3
Species	Human
Expression Host	HEK293 Cells
Sequence	Ala24-Ala93
Accession	P16619
Calculated Molecular Weight	8.8 kDa
Observed molecular weight	18 kDa
Tag	C-His

Properties

Purity	> 95 % as determined by reducing SDS-PAGE.
Endotoxin	< 1.0 EU per µg of the protein as determined by the LAL method.
Storage	Generally, lyophilized proteins are stable for up to 12 months when stored at -20 to -80°C. Reconstituted protein solution can be stored at 4-8°C for 2-7 days. Aliquots of reconstituted samples are stable at < -20°C for 3 months.
Shipping	This product is provided as lyophilized powder which is shipped with ice packs.
Formulation	Lyophilized from a 0.2 µm filtered solution of 20mM PB, 150mM NaCl, pH 7.4. Normally 5 % - 8 % trehalose, mannitol and 0.01% Tween80 are added as protectants before lyophilization. Please refer to the specific buffer information in the printed man
Reconstitution	Please refer to the printed manual for detailed information.

Data



> 95 % as determined by reducing SDS-PAGE.

Background

C-C Motif Chemokine 3-Like 1 (CCL3L1) is a secreted protein that belongs to the intercrine beta (chemokine CC) family. CCL3L1 is a ligand for CCR1, CCR3 and CCR5. CCL3L1 binds to several chemokine receptors including chemokine binding protein 2 and chemokine (C-C motif) receptor 5 (CCR5). CCR5 is a co-receptor for HIV, and binding of this protein to CCR5 inhibits HIV entry. The processed form LD78-beta (3-70) shows a 20-fold to 30-fold higher chemotactic activity and is a very potent inhibitor of HIV-1-infection. The copy number of this gene varies among individuals: most individuals have 1-6 copies in the diploid genome, although rare individuals have zero or more than six

For Research Use Only

A Reliable Research Partner in Life Science and Medicine

Toll-free: 1-888-852-8623

Web: www.elabscience.com

Tel: 1-832-243-6086

Email: techsupport@elabscience.com

Fax: 1-832-243-6017

Recombinant Human CCL3L1 Protein (His Tag)

Catalog Number:PKSH032198



copies. The human genome reference assembly contains two full copies of the gene (CCL3L3 and CCL3L1) and a partial pseudogene. This record represents the more centromeric full-length gene.

For Research Use Only

A Reliable Research Partner in Life Science and Medicine

Toll-free: 1-888-852-8623

Web: www.elabscience.com

Tel: 1-832-243-6086

Email: techsupport@elabscience.com

Fax: 1-832-243-6017