

Recombinant Human PYM1/WIBG Protein (His Tag)

Catalog Number:PKSH032857



Note: Centrifuge before opening to ensure complete recovery of vial contents.

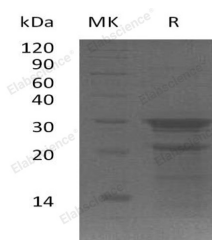
Description

Synonyms	Partner of Y14 and Mago;Protein Wibg Homolog;WIBG;PYM
Species	Human
Expression Host	E.coli
Sequence	Met 1-Leu204
Accession	Q9BRP8
Calculated Molecular Weight	23.7 kDa
Observed molecular weight	30 kDa
Tag	C-His

Properties

Purity	> 80 % as determined by reducing SDS-PAGE.
Endotoxin	< 1.0 EU per µg of the protein as determined by the LAL method.
Storage	Store at < -20°C, stable for 6 months. Please minimize freeze-thaw cycles.
Shipping	This product is provided as liquid. It is shipped at frozen temperature with blue ice/gel packs. Upon receipt, store it immediately at < - 20°C.
Formulation	Supplied as a 0.2 µm filtered solution of 20mM Tris-HCl, 100mM NaCl, 10% Glycerol, pH 8.0.
Reconstitution	Not Applicable

Data



> 80 % as determined by reducing SDS-PAGE.

Background

Partner of Y14 and Mago (WIBG) is a key regulator of the Exon Junction Complex (EJC). EJC is a multiprotein complex that associates immediately upstream of the exon-exon junction on mRNAs, is a positional landmark for the intron exon structure of genes, and directs post-transcriptional processes in the cytoplasm, for instance mRNA export, nonsense-mediated mRNA decay or translation. WIBG is a cytoplasmic RNA-binding protein, it can be excluded from nucleus by Crm1. WIBG as a cooperating partner of Mago-14, relates with Mago-14 by its N-terminal domain.

For Research Use Only

A Reliable Research Partner in Life Science and Medicine

Toll-free: 1-888-852-8623

Web: www.elabscience.com

Tel: 1-832-243-6086

Email: techsupport@elabscience.com

Fax: 1-832-243-6017