

Recombinant PLCG2 Monoclonal Antibody

catalog number: **AN301893L**

Note: Centrifuge before opening to ensure complete recovery of vial contents.

Description

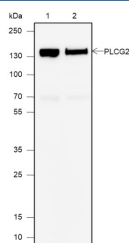
Reactivity	Human;
Immunogen	Recombinant human PLCG2 fragment
Host	Rabbit
Isotype	IgG, κ
Clone	A609
Purification	Protein A purified
Buffer	PBS, 50% glycerol, 0.05% Proclin 300, 0.05% protein protectant.

Applications

Recommended Dilution

WB	1:500-1:1000
-----------	--------------

Data



Western Blot with PLCG2 Monoclonal Antibody at dilution of 1:1000. Lane 1: Raji, Lane 2: Romas

Observed-MW:148 kDa

Calculated-MW:148 kDa

Preparation & Storage

Storage	Store at -20°C Valid for 12 months. Avoid freeze / thaw cycles.
Shipping	Ice bag

Background

Phospholipase C-gamma2 (PLCG2) is a transmembrane signaling enzyme that catalyzes the conversion of 1-phosphatidyl-1D-myo-inositol 4,5-bisphosphate to 1D-myo-inositol 1,4,5-trisphosphate (IP3) and diacylglycerol (DAG) using calcium as a cofactor. IP3 and DAG are second messenger molecules important for transmitting signals from growth factor receptors and immune system receptors across the cell membrane. Mutations in this gene have been found in autoinflammation, antibody deficiency, and immune dysregulation syndrome and familial cold autoinflammatory syndrome.

For Research Use Only

Toll-free: 1-888-852-8623
Web: www.elabscience.com

Tel: 1-832-243-6086
Email: techsupport@elabscience.com

Fax: 1-832-243-6017

Rev. V1.0