

Recombinant Human MDH1 Protein (His Tag)

Catalog Number: PKSH032730

Note: Centrifuge before opening to ensure complete recovery of vial contents.

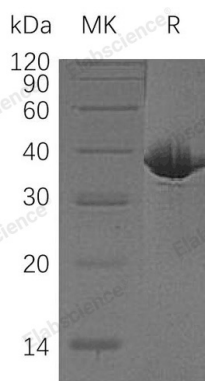
Description

Species	Human
Source	E.coli-derived Human MDH1 protein Ser2-Ala334, with an C-terminal His
Mol_Mass	37.5 kDa
Accession	P40925
Bio-activity	Not validated for activity

Properties

Purity	> 95 % as determined by reducing SDS-PAGE.
Endotoxin	< 1.0 EU per µg of the protein as determined by the LAL method.
Storage	Store at < -20°C, stable for 6 months. Please minimize freeze-thaw cycles.
Shipping	This product is provided as liquid. It is shipped at frozen temperature with blue ice/gel packs. Upon receipt, store it immediately at < - 20°C.
Formulation	Supplied as a 0.2 µm filtered solution of 20mM Tris-HCl, 150mM NaCl, pH 8.0.
Reconstitution	Not Applicable

Data



> 95 % as determined by reducing SDS-PAGE.

Background

Malate Dehydrogenase, Cytoplasmic (MDH1) is an enzyme which belongs to the MDH Type 2 sub-family of LDH/MDH superfamily. MDH1 is involved in the Citric Acid Cycle that catalyzes the conversion of Malate into Oxaloacetate (using NAD⁺) and vice versa. MDH1 should not be confused with Malic Enzyme, which catalyzes the conversion of Malate to Pyruvate, producing NADPH. MDH1 also participates in Gluconeogenesis, the synthesis of Glucose from smaller molecules. Pyruvate in the mitochondria is acted upon by Pyruvate Carboxylase to form Oxaloacetate, a Citric Acid Cycle intermediate. In order to transport the Oxaloacetate out of the Mitochondria, Malate Dehydrogenase reduces it to Malate, and it then traverses the inner Mitochondrial membrane. Once in the cytosol, the Malate is oxidized back to Oxaloacetate by MDH1. Finally, Phosphoenol-Pyruvate Carboxy Kinase (PEPCK) converts Oxaloacetate to Phosphoenol Pyruvate.

For Research Use Only