

## IL12RB2 Polyclonal Antibody

**catalog number: E-AB-13323**

**Note:** Centrifuge before opening to ensure complete recovery of vial contents.

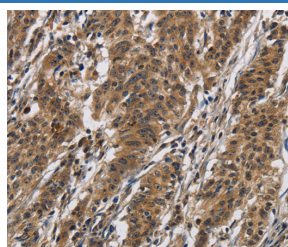
### Description

<b>Reactivity</b>	Human
<b>Immunogen</b>	Synthetic peptide of human IL12RB2
<b>Host</b>	Rabbit
<b>Isotype</b>	IgG
<b>Purification</b>	Affinity purification
<b>Buffer</b>	Phosphate buffered solution, pH 7.4, containing 0.05% stabilizer and 50% glycerol.

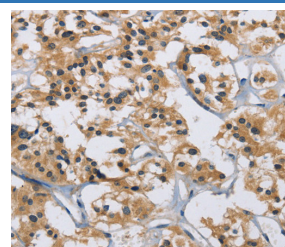
### Applications

Applications	Recommended Dilution
IHC	1:50-1:200

### Data



1:40



1:40

Immunohistochemistry of paraffin-embedded Human gastric cancer tissue using IL12RB2 Polyclonal Antibody at dilution 1:40. Immunohistochemistry of paraffin-embedded Human thyroid cancer tissue using IL12RB2 Polyclonal Antibody at dilution 1:40.

### Preparation & Storage

<b>Storage</b>	Store at -20°C Valid for 12 months. Avoid freeze / thaw cycles.
<b>Shipping</b>	The product is shipped with ice pack, upon receipt, store it immediately at the temperature recommended.

### Background

The protein encoded by this gene is a type I transmembrane protein identified as a subunit of the interleukin 12 receptor complex. The coexpression of this and IL12RB1 proteins was shown to lead to the formation of high-affinity IL12 binding sites and reconstitution of IL12 dependent signaling. The expression of this gene is up-regulated by interferon gamma in Th1 cells, and plays a role in Th1 cell differentiation. The up-regulation of this gene is found to be associated with a number of infectious diseases, such as Crohn's disease and leprosy, which is thought to contribute to the inflammatory response and host defense. Several transcript variants encoding different isoforms and non-protein coding transcripts have been found for this gene.

### For Research Use Only

Toll-free: 1-888-852-8623  
Web: [www.elabscience.com](http://www.elabscience.com)

Tel: 1-832-243-6086  
Email: [techsupport@elabscience.com](mailto:techsupport@elabscience.com)

Fax: 1-832-243-6017

Rev. V1.6