

## Recombinant Human LAG-3/CD223 (C-6His-Avi) Biotinylated

Catalog Number: PKSH033875

**Note:** Centrifuge before opening to ensure complete recovery of vial contents.

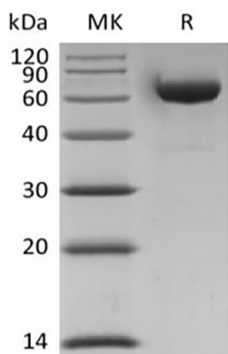
### Description

<b>Species</b>	Human
<b>Source</b>	HEK293 Cells-derived Human LAG-3;CD233 protein Leu23-Leu450, with an C-terminal His & Avi
<b>Calculated MW</b>	49.0 kDa
<b>Observed MW</b>	60-70 kDa
<b>Accession</b>	P18627
<b>Bio-activity</b>	Not validated for activity

### Properties

<b>Purity</b>	> 95 % as determined by reducing SDS-PAGE.
<b>Endotoxin</b>	< 1.0 EU per µg of the protein as determined by the LAL method.
<b>Storage</b>	Generally, lyophilized proteins are stable for up to 12 months when stored at -20 to -80°C. Reconstituted protein solution can be stored at 4-8°C for 2-7 days. Aliquots of reconstituted samples are stable at < -20°C for 3 months.
<b>Shipping</b>	This product is provided as lyophilized powder which is shipped with ice packs.
<b>Formulation</b>	Lyophilized from a 0.2 µm filtered solution of PBS, pH 7.4. Normally 5% - 8% trehalose, mannitol and 0.01% Tween 80 are added as protectants before lyophilization. Please refer to the specific buffer information in the printed manual.
<b>Reconstitution</b>	Please refer to the printed manual for detailed information.

### Data



> 95 % as determined by reducing SDS-PAGE.

### Background

Human Lymphocyte activation gene 3 protein (LAG3) is a member of immunoglobulin (Ig) superfamily. LAG3 contains 4 extracellular Ig-like domains. The LAG3 gene contains 8 exons. LAG3 is involved in lymphocyte activation and can bind to HLA class-II antigens. It is selectively expressed in activated T and NK cells. LAG3 has a negative regulatory function in T cells and acts as a new marker of T cell induced B cell activation. As a soluble molecule, LAG3 activates antigen-presenting cells through MHC class II signaling. It can lead to increased antigen-specific T-cell responses in vivo. LAG-3 has higher affinity to MHC class II than CD4.

### For Research Use Only