

Recombinant Human PSGL-1/CD162 Protein (His &Fc Tag)

Catalog Number: PKSH031570

Note: Centrifuge before opening to ensure complete recovery of vial contents.

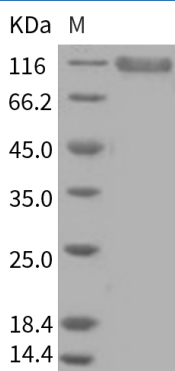
Description

Species	Human
Source	HEK293 Cells-derived Human PSGL-1/CD162 protein Met 1-Val295, with an C-terminal His & Fc
Calculated MW	57.1 kDa
Observed MW	110-120 kDa
Accession	AAC50061.1
Bio-activity	Not validated for activity

Properties

Purity	> 95 % as determined by reducing SDS-PAGE.
Endotoxin	< 1.0 EU per µg of the protein as determined by the LAL method.
Storage	Generally, lyophilized proteins are stable for up to 12 months when stored at -20 to -80 °C. Reconstituted protein solution can be stored at 4-8°C for 2-7 days. Aliquots of reconstituted samples are stable at < -20°C for 3 months.
Shipping	This product is provided as lyophilized powder which is shipped with ice packs.
Formulation	Lyophilized from sterile PBS, pH 7.4 Normally 5% - 8% trehalose, mannitol and 0.01% Tween 80 are added as protectants before lyophilization. Please refer to the specific buffer information in the printed manual.
Reconstitution	Please refer to the printed manual for detailed information.

Data



> 95 % as determined by reducing SDS-PAGE.

Background

For Research Use Only

Toll-free: 1-888-852-8623
Web: www.elabscience.com

Tel: 1-832-243-6086
Email: techsupport@elabscience.com

Fax: 1-832-243-6017

P-selectin glycoprotein ligand-1 (PSGL-1), also known as SELPLG or CD162, is the high affinity counter-receptor for P-selectin on expressed on activated endothelial cells and platelets. PSGL-1 is a mucin-type glycoprotein, expressed on leukocytes and platelets as a homodimer of two disulfide-linked subunits of ~120 kD. As cell adhesion molecules, multiple studies have shown that PSGL-1/ P-selectin interaction is required for the normal recruitment of leukocytes during inflammatory reactions, and also participates in hemostatic responses. PSGL-1 protein requires two distinct posttranslational modifications for the Ca^{2+} -dependent recognition by the lectin domain of P-selectin, that is tyrosine sulfation and specific O-linked glycosylation (sialic acid and fucose). PSGL-1 can also bind to other two members of the selectin family, E-selectin (endothelial) and L-selectin (leukocyte), but binds best to P-selectin.