

TDP2 Polyclonal Antibody

catalog number: E-AB-19338

Note: Centrifuge before opening to ensure complete recovery of vial contents.

Description

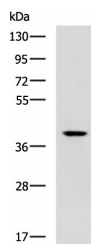
Reactivity	Human;Mouse
Immunogen	Synthetic peptide of human TDP2
Host	Rabbit
Isotype	IgG
Purification	Antigen affinity purification
Conjugation	Unconjugated
Buffer	Phosphate buffered solution, pH 7.4, containing 0.05% stabilizer and 50% glycerol.

Applications

Recommended Dilution

WB	1:500-1:2000
IHC	1:50-1:300

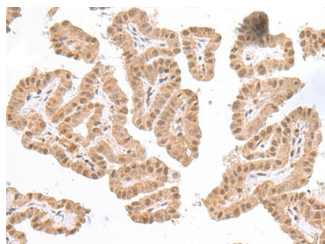
Data



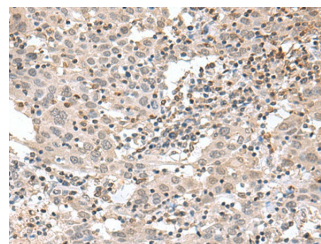
Western blot analysis of Mouse small intestines tissue lysate using TDP2 Polyclonal Antibody at dilution of 1:600

Observed-MW:Refer to figures

Calculated-MW:41 kDa



Immunohistochemistry of paraffin-embedded Human thyroid cancer tissue using TDP2 Polyclonal Antibody at dilution of 1:75 (×200)



Immunohistochemistry of paraffin-embedded Human cervical cancer tissue using TDP2 Polyclonal Antibody at dilution of 1:75 (×200)

Preparation & Storage

Storage	Store at -20°C Valid for 12 months. Avoid freeze / thaw cycles.
Shipping	The product is shipped with ice pack, upon receipt, store it immediately at the temperature recommended.

Background

For Research Use Only

This gene encodes a member of a superfamily of divalent cation-dependent phosphodiesterases. The encoded protein associates with CD40, tumor necrosis factor (TNF) receptor-75 and TNF receptor associated factors (TRAFs), and inhibits nuclear factor-kappa-B activation. This protein has sequence and structural similarities with APE1 endonuclease, which is involved in both DNA repair and the activation of transcription factors.