

GTF2F2 Polyclonal Antibody

catalog number: E-AB-61136

Note: Centrifuge before opening to ensure complete recovery of vial contents.

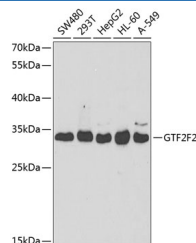
Description

Reactivity	Human
Immunogen	Recombinant fusion protein of human GTF2F2 (NP_004119.1).
Host	Rabbit
Isotype	IgG
Purification	Affinity purification
Buffer	Phosphate buffered solution, pH 7.4, containing 0.05% stabilizer and 50% glycerol.

Applications

Applications	Recommended Dilution
WB	1:500-1:2000
IF	1:50-1:200

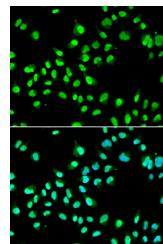
Data



Western blot analysis of extracts of various cell lines using GTF2F2 Polyclonal Antibody at dilution of 1:1000.

Observed-MW:29 kDa

Calculated-MW:28 kDa



Immunofluorescence analysis of A549 cells using GTF2F2 Polyclonal Antibody

Preparation & Storage

Storage	Store at -20°C Valid for 12 months. Avoid freeze / thaw cycles.
Shipping	The product is shipped with ice pack, upon receipt, store it immediately at the temperature recommended.

Background

GTF2F2 (General Transcription Factor IIF Subunit 2) is a Protein Coding gene. Among its related pathways are RNA Polymerase II Transcription Initiation And Promoter Clearance and Signaling by FGFR2 in disease. Gene Ontology (GO) annotations related to this gene include helicase activity and ATP-dependent helicase activity.

For Research Use Only