

Luciferase Monoclonal Antibody

Catalog Number:E-AB-22231



Note: Centrifuge before opening to ensure complete recovery of vial contents.

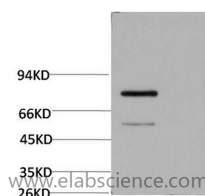
Description

Reactivity	Firefly
Immunogen	Synthetic Peptide of Luciferase
Host	Mouse
Isotype	IgG
Clone	Clone:2G11
Purification	Protein A purification
Formulation	PBS with 0.02% sodium azide, 0.5% protective protein and 50% glycerol, pH7.4

Applications Recommended Dilution

WB	1:1000-2000
-----------	-------------

Data



Western Blot analysis of Firefly Luciferase
Transfected Hela using Luciferase Monoclonal
Antibody at dilution of 1:2000.
Observed MW:60kDa

Preparation & Storage

Storage	Store at -20°C. Avoid freeze / thaw cycles.
----------------	---

Background

Luciferase from the firefly has become one of the more widely used reporter proteins for the study of gene expression. Luciferase catalyzes a bioluminescent reaction which requires the substrate luciferin as well as Mg²⁺ and ATP. Mixing these reagents with the cell extract containing luciferase, results in a flash of light that decays rapidly. This light can be detected by a luminometer. The total light emission is proportional to the luciferase activity of the sample.

For Research Use Only

A Reliable Research Partner in Life Science and Medicine

Toll-free: 1-888-852-8623

Web: www.elabscience.com

Tel: 1-832-243-6086

Email: techsupport@elabscience.com

Fax: 1-832-243-6017