

FGF17 Polyclonal Antibody

Catalog Number:E-AB-15029



Note: Centrifuge before opening to ensure complete recovery of vial contents.

Description

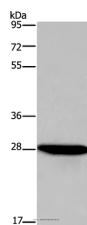
Reactivity	Human,Mouse,Rat
Immunogen	Recombinant protein of human FGF17
Host	Rabbit
Isotype	IgG
Purification	Affinity purification
Conjugation	Unconjugated
Formulation	PBS with 0.05% sodium azide and 50% glycerol, PH7.4

Applications

Recommended Dilution

WB	1:500-1:2000
-----------	--------------

Data



Western Blot analysis of HepG2 cell using FGF17
Polyclonal Antibody at dilution of 1:600
Calculated Mw:25kDa

Preparation & Storage

Storage Store at -20°C. Avoid freeze / thaw cycles.

Background

The protein encoded by this gene is a member of the fibroblast growth factor (FGF) family. FGF family members possess broad mitogenic and cell survival activities, and are involved in a variety of biological processes including embryonic development cell growth, morphogenesis, tissue repair, tumor growth and invasion. This gene was shown to be prominently expressed in the cerebellum and cortex. The mouse homolog of this gene was localized to specific sites in the midline structures of the forebrain, the midbrain-hindbrain junction, developing skeleton and developing arteries, which suggests a role in central nervous system, bone and vascular development. This gene was referred to as FGF-13 in reference 2, however, its amino acid sequence and chromosomal localization are identical to FGF17.

For Research Use Only

A Reliable Research Partner in Life Science and Medicine

Toll-free: 1-888-852-8623

Web: www.elabscience.com

Tel: 1-832-243-6086

Email: techsupport@elabscience.com

Fax: 1-832-243-6017