

Dap3 Polyclonal Antibody

Catalog Number: E-AB-15595



Note: Centrifuge before opening to ensure complete recovery of vial contents.

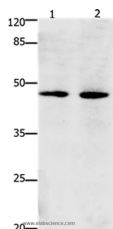
Description

Reactivity	Human ,Mouse
Immunogen	Synthetic peptide of mouse Dap3
Host	Rabbit
Isotype	IgG
Purification	Affinity purification
Conjugation	Unconjugated
Formulation	PBS with 0.05% sodium azide and 50% glycerol, PH7.4

Applications Recommended Dilution

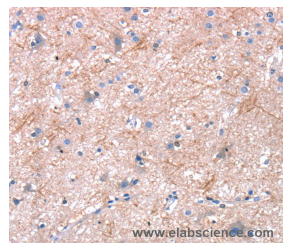
WB	1:1000-1:3000
IHC	1:25-1:100

Data



Western Blot analysis of Hepg2 and Hela cell using Dap3 Polyclonal Antibody at dilution of 1:900

Observed Mw: Refer to figures
Calculated Mw: 45kDa



Immunohistochemistry of paraffin-embedded Human brain using Dap3 Polyclonal Antibody at dilution of 1:45

Preparation & Storage

Storage Store at -20°C. Avoid freeze / thaw cycles.

Background

28S ribosomal protein S29, mitochondrial is a protein that in humans is encoded by the DAP3 gene. Mammalian mitochondrial ribosomal proteins are encoded by nuclear genes and help in protein synthesis within the mitochondrion. Mitochondrial ribosomes (mitoribosomes) consist of a small 28S subunit and a large 39S subunit. This protein potentially binds ATP/GTP and might be a functional partner of the mitoribosomal protein S27. Splice variants that differ in the 5' UTR have been found for this gene; both variants encode the same protein. Pseudogenes corresponding to this gene are found on chromosomes 1q and 2q. DAP3 has been shown to interact with FADD, TNFRSF10A, Glucocorticoid receptor and Heat shock protein 90kDa alpha (cytosolic), member A1.

For Research Use Only

A Reliable Research Partner in Life Science and Medicine

Toll-free: 1-888-852-8623

Web: www.elabscience.com

Tel: 1-832-243-6086

Email: techsupport@elabscience.com

Fax: 1-832-243-6017