

# Recombinant Human Complement Component C8 Gamma Chain/C8G Protein (His Tag)



Catalog Number:PKSH032271

**Note:** Centrifuge before opening to ensure complete recovery of vial contents.

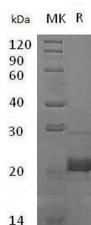
## Description

<b>Synonyms</b>	Complement component C8 gamma chain;C8G
<b>Species</b>	Human
<b>Expression Host</b>	E.coli
<b>Sequence</b>	Gln21-Arg202
<b>Accession</b>	AAI13627.1
<b>Calculated Molecular Weight</b>	22.6 kDa
<b>Observed molecular weight</b>	22 kDa
<b>Tag</b>	N-His

## Properties

<b>Purity</b>	> 95 % as determined by reducing SDS-PAGE.
<b>Endotoxin</b>	< 1.0 EU per µg of the protein as determined by the LAL method.
<b>Storage</b>	Store at < -20°C, stable for 6 months. Please minimize freeze-thaw cycles.
<b>Shipping</b>	This product is provided as liquid. It is shipped at frozen temperature with blue ice/gel packs. Upon receipt, store it immediately at < - 20°C.
<b>Formulation</b>	Supplied as a 0.2 µm filtered solution of 20mM PB, 150mM NaCl, pH 7.4.
<b>Reconstitution</b>	Not Applicable

## Data



> 95 % as determined by reducing SDS-PAGE.

## Background

Complement component C8 is a constituent of the membrane attack complex, C8 alpha, C8 beta and C8G. C8G is a secreted protein and consists a disulfide-linked C8 alpha-gamma heterodimer and a non-covalently associated C8 beta chain. C8 alpha and C8 beta play an important role in complement-mediated bacterial killing together. C8 is involved in the formation of Membrane Attack Complex on bacterial cell membranes. C8 binds to the C5B-7 complex, forming the C5B-8 complex. C5-B8 binds C9 and acts as a catalyst in the polymerization of C9. The gamma subunit seems to be able to bind retinol. Patients lacking C8 are susceptible to certain bacterial infections.

## For Research Use Only

A Reliable Research Partner in Life Science and Medicine

Toll-free: 1-888-852-8623

Web: [www.elabscience.com](http://www.elabscience.com)

Tel: 1-832-243-6086

Email: [techsupport@elabscience.com](mailto:techsupport@elabscience.com)

Fax: 1-832-243-6017