

Recombinant Human CTRL Protein (His Tag)

Catalog Number:PKSH032253



Note: Centrifuge before opening to ensure complete recovery of vial contents.

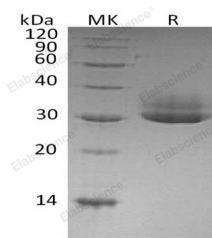
Description

Synonyms	Chymotrypsin-Like Protease CTRL-1;CTRL;CTRL1
Species	Human
Expression Host	HEK293 Cells
Sequence	Cys19-Asn264
Accession	P40313
Calculated Molecular Weight	27.2 kDa
Observed molecular weight	28-38 kDa
Tag	C-His

Properties

Purity	> 95 % as determined by reducing SDS-PAGE.
Endotoxin	< 1.0 EU per µg of the protein as determined by the LAL method.
Storage	Store at < -20°C, stable for 6 months. Please minimize freeze-thaw cycles.
Shipping	This product is provided as liquid. It is shipped at frozen temperature with blue ice/gel packs. Upon receipt, store it immediately at < - 20°C.
Formulation	Supplied as a 0.2 µm filtered solution of 20mM Tris-HCl, 150mM NaCl, 10% Glycerol, pH 8.0.
Reconstitution	Not Applicable

Data



> 95 % as determined by reducing SDS-PAGE.

Background

Chymotrypsin-Like Protease CTRL-1 is a protease that belongs to the peptidase S1 family. Human CTRL-1 is synthesized as a 264 amino acid (aa) precursor that contains an 18 aa signal sequence, 15 aa activation peptide and a 231 aa mature chain. CTRL-1 Contains 1 peptidase S1 domain. It has many molecular functions, such as hydrolase, protease, and serine protease. CTRL-1 plays a role in digest and hydrolyze proteins in biological process.

For Research Use Only

A Reliable Research Partner in Life Science and Medicine

Toll-free: 1-888-852-8623

Web: www.elabscience.com

Tel: 1-832-243-6086

Email: techsupport@elabscience.com

Fax: 1-832-243-6017