

p21 Polyclonal Antibody

catalog number: E-AB-70068

Note: Centrifuge before opening to ensure complete recovery of vial contents.

Description

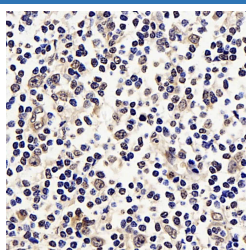
Reactivity	Human;Mouse;Rat
Immunogen	KLH conjugated Synthetic peptide corresponding to Mouse P21
Host	Rabbit
Isotype	IgG
Purification	Affinity purification
Conjugation	Unconjugated
buffer	Phosphate buffered solution, pH 7.4, containing 0.05% stabilizer, 1% protein protectant and 50% glycerol.

Applications

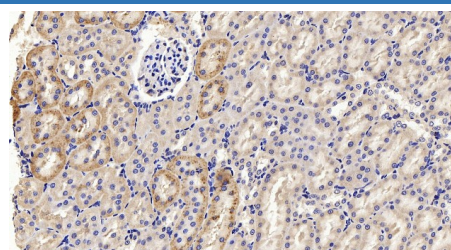
Recommended Dilution

IHC	1:200-1:800
------------	-------------

Data



Immunohistochemistry analysis of paraffin-embedded Human tonsil using p21 Polyclonal Antibody at dilution of 1:300.



Immunohistochemistry analysis of paraffin-embedded Rat kidney using p21 Polyclonal Antibody at dilution of 1:300.

Preparation & Storage

Storage	Store at -20°C Valid for 12 months. Avoid freeze / thaw cycles.
Shipping	The product is shipped with ice pack,upon receipt,store it immediately at the temperature recommended.

Background

CDKN1A (p21,CIP1,WAF1),a cyclin-dependent kinase inhibitor,is necessary for proper control of the cell cycle and premature senescence. P21 is a cyclin-dependent kinase (CDK) inhibitor that suppresses proliferation by inhibiting CDK2 and CDK1 activity at the G1/S and G2/M transitions. P21 is a major mediator of p53 to induce cell cycle arrest in G1. p21 can interact with proliferating cell nuclear antigen (PCNA),and plays a regulatory role in S phase DNA replication and DNA damage repair. P21 was reported to be specifically cleaved by CASP3-like caspases,which thus leads to a dramatic activation of CDK2,and may be instrumental in the execution of apoptosis following caspase activation. Overexpression of p21 decreases the expression levels of cell cycle progression genes and upregulates senescence-inducing genes.

For Research Use Only