

Recombinant WTAP Monoclonal Antibody

Catalog Number:E-AB-81431



Note: Centrifuge before opening to ensure complete recovery of vial contents.

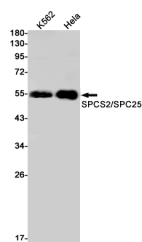
Description

Reactivity	Human
Immunogen	Recombinant protein of human WTAP
Host	Rabbit
Isotype	IgG
Clone	R09-9D8
Purification	Affinity Purified
Conjugation	Unconjugated
Formulation	50mM Tris-Glycine(pH 7.4), 0.15M NaCl, 40% Glycerol, 0.01% Sodium azide and 0.05% protective protein

Applications Recommended Dilution

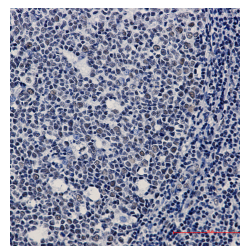
WB	1:500-1:1000
IHC	1:20-1:100IP

Data



Western blot detection of SPCS2/SPC25 in K562, HeLa cell lysates using SPCS2/SPC25 Rabbit mAb (1:1000 diluted). Predicted band size: 44kDa. Observed band size: 55kDa.

Observed Mw:55kDa
Calculated Mw:44kDa



Immunohistochemistry of WTAP in paraffin-embedded Human tonsil using WTAP Rabbit mAb at dilution 1:20

Preparation & Storage

Storage Store at -20°C. Avoid freeze / thaw cycles.

Background

WTAP, also named as KIAA0105 and hFL(2)D, is previously identified as a protein associated with Wilms' tumor-1 (WT-1) protein that is essential for the development of the genitourinary system. It is a Pre-mRNA-splicing regulator protein. It is a regulatory subunit of the WMM N6-methyltransferase complex which plays a role in the efficiency of mRNA splicing and processing and mRNA stability. It is required for accumulation of METTL3 and METTL14 to nuclear speckle.

For Research Use Only

A Reliable Research Partner in Life Science and Medicine

Toll-free: 1-888-852-8623

Web: www.elabscience.com

Tel: 1-832-243-6086

Email: techsupport@elabscience.com

Fax: 1-832-243-6017