

Recombinant Mouse Serpin F1/PEDF Protein

Catalog Number: PKSM041232



Note: Centrifuge before opening to ensure complete recovery of vial contents.

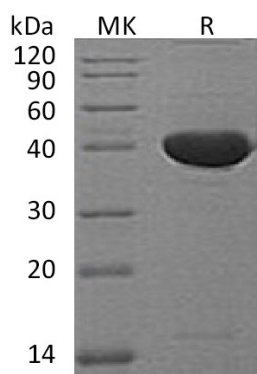
Description

Species	Mouse
Mol_Mass	42.0 kDa
Accession	P97298
Bio-activity	Not validated for activity

Properties

Purity	> 95 % as determined by reducing SDS-PAGE.
Endotoxin	< 1.0 EU per µg of the protein as determined by the LAL method.
Storage	Store at < -20°C, stable for 6 months. Please minimize freeze-thaw cycles.
Shipping	This product is provided as liquid. It is shipped at frozen temperature with blue ice/gel packs. Upon receipt, store it immediately at < - 20°C.
Formulation	Supplied as a 0.2 µm filtered solution of PBS, pH7.4.
Reconstitution	Not Applicable

Data



Background

Serpin F1 is secreted Neurotrophic protein and belongs to the serpin family. Serpin F1 Highly expressed in the liver, gastric glandular mucosa and renal tubules. It is also expressed in the brain, heart, lung retina and testes. It induces extensive neuronal differentiation in retinoblastoma cells. It is potent inhibitor of angiogenesis. As it does not undergo the S (stressed) to R (relaxed) conformational transition characteristic of active serpins, exhibits no serine protease inhibitory activity.

For Research Use Only

A Reliable Research Partner in Life Science and Medicine
Tel:400-999-2100

Email:techsupport@elabscience.cn

Web:www.elabscience.cn

Rev. V3.2