

# gamma Tubulin Monoclonal Antibody

Catalog Number:E-AB-22137



**Note:** Centrifuge before opening to ensure complete recovery of vial contents.

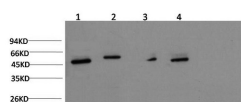
## Description

<b>Reactivity</b>	Human,Mouse,Rat
<b>Immunogen</b>	Synthetic Peptide of Gamma Tubulin
<b>Host</b>	Mouse
<b>Isotype</b>	IgG
<b>Clone</b>	Clone:3E4
<b>Purification</b>	Protein A purification
<b>Conjugation</b>	Unconjugated
<b>Formulation</b>	PBS with 0.02% sodium azide, 0.5% protective protein and 50% glycerol, pH7.4

## Applications Recommended Dilution

<b>WB</b>	1:1000-2000
<b>IHC</b>	1:100-200

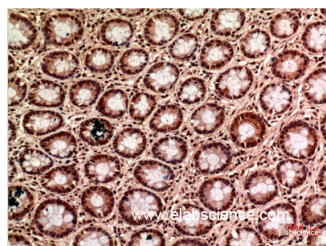
## Data



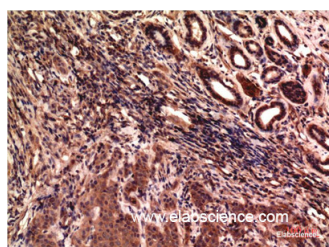
www.elabscience.com

Western Blot analysis of Jurkat, Hela, Mouse brain, Rat brain using gamma Tubulin Monoclonal Antibody at dilution of 1:1000.

**Observed Mw:50kDa**



Immunohistochemistry of paraffin-embedded Human colon carcinoma tissue using gamma Tubulin Monoclonal Antibody at dilution of 1:200.



Immunohistochemistry of paraffin-embedded Human breast carcinoma tissue using gamma Tubulin Monoclonal Antibody at dilution of 1:200.

## Preparation & Storage

**Storage** Store at -20°C. Avoid freeze / thaw cycles.

## Background

This gene encodes a member of the tubulin superfamily. The encoded protein localizes to the centrosome where it binds

## For Research Use Only

A Reliable Research Partner in Life Science and Medicine

Toll-free: 1-888-852-8623

Web: [www.elabscience.com](http://www.elabscience.com)

Tel: 1-832-243-6086

Email: [techsupport@elabscience.com](mailto:techsupport@elabscience.com)

Fax: 1-832-243-6017

# gamma Tubulin Monoclonal Antibody

Catalog Number: E-AB-22137



to microtubules as part of a complex referred to as the gamma-tubulin ring complex. The protein mediates microtubule nucleation and is required for microtubule formation and progression of the cell cycle. A pseudogene of this gene is found on chromosome 7. TUBG1 (Tubulin Gamma 1) is a Protein Coding gene. Diseases associated with TUBG1 include Cortical Dysplasia, Complex, With Other Brain Malformations 4 and Reducing Body Myopathy. Among its related pathways are Regulation of PLK1 Activity at G2/M Transition and Sertoli-Sertoli Cell Junction Dynamics. GO annotations related to this gene include GTP binding and structural constituent of cytoskeleton. An important paralog of this gene is TUBG2.

---

## For Research Use Only

A Reliable Research Partner in Life Science and Medicine

Toll-free: 1-888-852-8623

Tel: 1-832-243-6086

Fax: 1-832-243-6017

Web: [www.elabscience.com](http://www.elabscience.com)

Email: [techsupport@elabscience.com](mailto:techsupport@elabscience.com)