

FITC Anti-Human CD22 Antibody[HIB22]

Catalog Number: E-AB-F1321C

Note: Centrifuge before opening to ensure complete recovery of vial contents.

Description

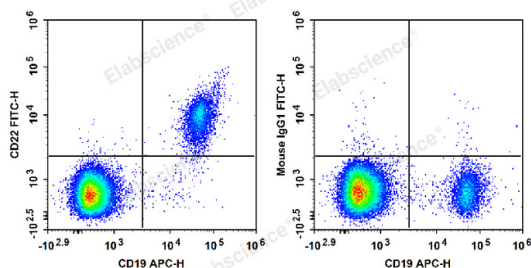
Reactivity	Human
Host	Mouse
Isotype	Mouse IgG1, κ
Clone No.	HIB22
Isotype Control	FITC Mouse IgG1, κ Isotype Control[MOPC-21] [Product E-AB-F09792C]
Conjugation	FITC
Conjugation Information	FITC is designed to be excited by the Blue laser (488 nm) and detected using an optical filter centered near 530 nm (e.g., a 525/40 nm bandpass filter).
Storage Buffer	Phosphate buffered solution, pH 7.2, containing 0.09% stabilizer.

Applications

Recommended usage

FCM	Each lot of this antibody is quality control tested by flow cytometric analysis. The amount of the reagent is suggested to be used 5 μL of antibody per test (million cells in 100 μL staining volume or per 100 μL of whole blood). Please check your vial before the experiment. Since applications vary, the appropriate dilutions must be determined for individual use.
------------	---

Data



Human peripheral blood lymphocytes are stained with APC Anti-Human CD19 Antibody and FITC Anti-Human CD22 Antibody (Left). Lymphocytes are stained with APC Anti-Human CD19 Antibody and FITC Mouse IgG1, κ Isotype Control (Right).

Preparation & Storage

Storage	Keep as concentrated solution. This product can be stored at 2-8°C for 24 months. Please protected from prolonged exposure to light and do not freeze.
Shipping	Ice bag

Antigen Information

Alternate Names	Siglec2;B-cell receptor CD22;B-lymphocyte cell adhesion molecule;BL-CAM;CD22; Cd22;Lyb-8;Sialic acid-binding Ig-like lectin 2;Siglec-2;T-cell surface antigen Leu-14
Uniprot ID	P20273

For Research Use Only

Gene ID

933

Background

CD22 is a 130 kD type I transmembrane glycoprotein also known as Siglec-2 and BL-CAM. It is a member of the immunoglobulin superfamily (sialoadhesion subgroup). CD22 is expressed in the cytoplasm of pro-B and pre-B cells, and on the surface of mature B and activated B cells, but not on plasma cells. CD22 is present in the B cell receptor complex and associates with SHP-1, Syk, Lck, Lyn, and phospholipase C γ 1. A primary function of CD22 is thought to be in limiting antigen receptor signaling by modulating B cell activation threshold. CD22 has been shown to bind to CD45RO and CD75, although the natural ligands for this molecule remain controversial.