

RPS3 Polyclonal Antibody

Catalog Number: E-AB-17008



Note: Centrifuge before opening to ensure complete recovery of vial contents.

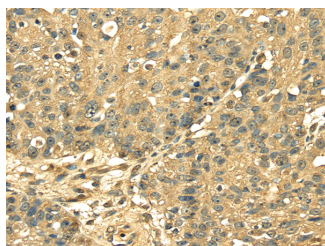
Description

Reactivity	Human, Mouse, Rat
Immunogen	Full length fusion protein
Host	Rabbit
Isotype	IgG
Purification	Affinity purification
Conjugation	Unconjugated
Formulation	PBS with 0.05% sodium azide and 50% glycerol, PH7.4

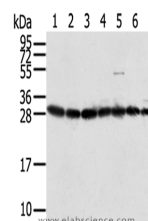
Applications Recommended Dilution

WB	1:500-2000
IHC	1:25-100
ELISA	1:2000-5000

Data



Immunohistochemistry of paraffin-embedded Human breast cancer using RPS3 Polyclonal Antibody at dilution of 1/25
Calculated Mw: 27 kDa



Western Blot analysis of HepG2, Jurkat, HeLa, Raji, RAW264.7, A549 and 293T cells using RPS3 Polyclonal Antibody at dilution of 1/350

Preparation & Storage

Storage Store at -20°C. Avoid freeze / thaw cycles.

Background

Ribosomes, the organelles that catalyze protein synthesis, consist of a small 40S subunit and a large 60S subunit. Together these subunits are composed of 4 RNA species and approximately 80 structurally distinct proteins. This gene encodes a ribosomal protein that is a component of the 40S subunit, where it forms part of the domain where translation is initiated. The protein belongs to the S3P family of ribosomal proteins. Studies of the mouse and rat proteins have demonstrated that the protein has an extraribosomal role as an endonuclease involved in the repair of UV-induced DNA damage.

For Research Use Only

A Reliable Research Partner in Life Science and Medicine

Toll-free: 1-888-852-8623

Web: www.elabscience.com

Tel: 1-832-243-6086

Email: techsupport@elabscience.com

Fax: 1-832-243-6017