

# RPS27L Polyclonal Antibody

Catalog Number: E-AB-18756



**Note:** Centrifuge before opening to ensure complete recovery of vial contents.

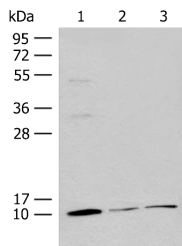
## Description

<b>Reactivity</b>	Human, Mouse, Rat
<b>Immunogen</b>	Fusion protein of human RPS27L
<b>Host</b>	Rabbit
<b>Isotype</b>	IgG
<b>Purification</b>	Antigen affinity purification
<b>Conjugation</b>	Unconjugated
<b>Formulation</b>	PBS with 0.05% NaN <sub>3</sub> and 40% Glycerol, pH 7.4

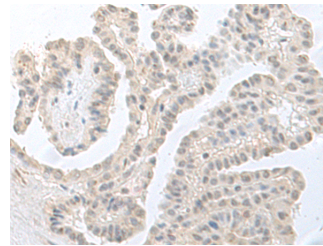
## Applications Recommended Dilution

<b>WB</b>	1:500-1:2000
<b>IHC</b>	1:40-1:200
<b>ELISA</b>	1:5000-1:10000

## Data



Western blot analysis of Mouse adrenal gland tissue  
Rat lung tissue 231 cell lysates using RPS27L  
Polyclonal Antibody at dilution of 1:400  
**Observed MW: Refer to figures**  
**Calculated Mw: 9 kDa**



Immunohistochemistry of paraffin-embedded  
Human thyroid cancer tissue using RPS27L  
Polyclonal Antibody at dilution of 1:55 (x200)

## Preparation & Storage

**Storage** Store at -20°C. Avoid freeze / thaw cycles.

## Background

This gene encodes a protein sharing 96% amino acid similarity with ribosomal protein S27, which suggests the encoded protein may be a component of the 40S ribosomal subunit. RPS27L (Ribosomal Protein S27 Like) is a Protein Coding gene. Among its related pathways are Viral mRNA Translation and Activation of the mRNA upon binding of the cap-binding complex and eIFs, and subsequent binding to 43S. GO annotations related to this gene include poly(A) RNA binding and cysteine-type endopeptidase activator activity involved in apoptotic process. An important paralog of this gene is RPS27.

## For Research Use Only

A Reliable Research Partner in Life Science and Medicine

Toll-free: 1-888-852-8623

Web: [www.elabscience.com](http://www.elabscience.com)

Tel: 1-832-243-6086

Email: [techsupport@elabscience.com](mailto:techsupport@elabscience.com)

Fax: 1-832-243-6017