

## PE/Cyanine7 Anti-Mouse CD103 Antibody[M290]

Catalog Number: E-AB-F1090H

Note: Centrifuge before opening to ensure complete recovery of vial contents.

### Description

<b>Reactivity</b>	Mouse
<b>Host</b>	Rat
<b>Isotype</b>	Rat IgG2a, $\kappa$
<b>Clone No.</b>	M290
<b>Isotype Control</b>	PE/Cyanine7 Rat IgG2a, $\kappa$ Isotype Control[2A3] [Product E-AB-F09832H]
<b>Conjugation</b>	PE/Cyanine 7
<b>Conjugation Information</b>	PE/Cyanine7 is designed to be excited by the Blue (488 nm), Green (532 nm) and yellow-green (561 nm) lasers and detected using an optical filter centered near 775 nm (e.g., a 780/60 nm bandpass filter).
<b>Storage Buffer</b>	Phosphate buffered solution, pH 7.2, containing 0.09% sodium azide and 1% BSA.

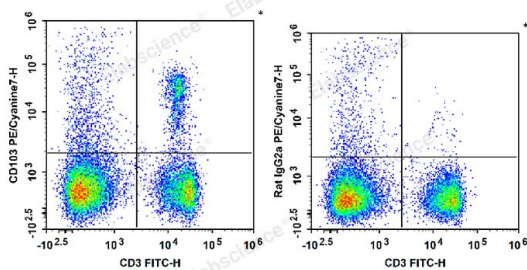
### Applications

### Recommended usage

FCM

Each lot of this antibody is quality control tested by flow cytometric analysis. **The amount of the reagent is suggested to be used 5  $\mu$ L of antibody per test (million cells in 100  $\mu$ L staining volume or per 100  $\mu$ L of whole blood).** Please check your vial before the experiment. Since applications vary, the appropriate dilutions must be determined for individual use.

### Data



C57BL/6 murine splenocytes are stained with FITC Anti-Mouse CD3 Antibody and PE/Cyanine7 Anti-Mouse CD103 Antibody (Left). Splenocytes are stained with FITC Anti-Mouse CD3 Antibody and PE/Cyanine7 Rat IgG2a,  $\kappa$  Isotype Control (Right).

### Preparation & Storage

<b>Storage</b>	Keep as concentrated solution. This product can be stored at 2-8°C for 12 months. Please protected from prolonged exposure to light and do not freeze.
<b>Shipping</b>	Ice bag

### Antigen Information

<b>Alternate Names</b>	CD103;Integrin alpha M290;Integrin alpha-E;Itgae
<b>Uniprot ID</b>	Q60677

### For Research Use Only

**Gene ID**

16407

**Background**

CD103 is a type I transmembrane glycoprotein known as  $\alpha E$  integrin or Integrin  $\alpha E L$  chain. It belongs to the integrin family and is primarily found on intestinal intraepithelial lymphocytes (IEL). CD103 is also expressed on a subpopulation of lamina propria T cells, epithelial dendritic cells, lamina propria-derived dendritic cells, and a small subset of peripheral lymphocytes. T regulatory cells express high level of CD103. The CD103 expression on lymphocytes can be induced upon activation and TGF- $\beta$  stimulation. In association with integrin  $\beta 7$ , CD103 is expressed as  $\alpha E/\beta 7$  heterodimer. Mature CD103 protein can be cleaved into 2 chains, a 150 kD (C-terminal) chain and a 25 kD (N-terminal) chain, which remain linked by disulfide bonds. CD103 binds to E-cadherin and mediates homing of lymphocytes to the intestinal epithelium.