

TMPRSS11D Polyclonal Antibody

Catalog Number: E-AB-17120



Note: Centrifuge before opening to ensure complete recovery of vial contents.

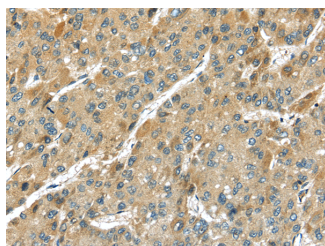
Description

Reactivity	Human
Immunogen	Fusion protein of human TMPRSS11D
Host	Rabbit
Isotype	IgG
Purification	Affinity purification
Conjugation	Unconjugated
Formulation	PBS with 0.05% sodium azide and 50% glycerol, PH7.4

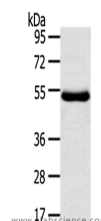
Applications Recommended Dilution

WB	1:500-2000
IHC	1:25-100
ELISA	1:2000-5000

Data



Immunohistochemistry of paraffin-embedded Human liver cancer using TMPRSS11D Polyclonal Antibody at dilution of 1/35
Calculated Mw:46 kDa



Western Blot analysis of Human thigh malignant fibrous histiocytoma tissue using TMPRSS11D Polyclonal Antibody at dilution of 1/800

Preparation & Storage

Storage Store at -20°C. Avoid freeze / thaw cycles.

Background

This gene encodes a trypsin-like serine protease released from the submucosal serous glands onto mucous membrane. It is a type II integral membrane protein and has 29-38% identity in the sequence of the catalytic region with human hepsin, enteropeptidase, acrosin, and mast cell tryptase. The noncatalytic region has little similarity to other known proteins.

For Research Use Only

A Reliable Research Partner in Life Science and Medicine

Toll-free: 1-888-852-8623

Web: www.elabscience.com

Tel: 1-832-243-6086

Email: techsupport@elabscience.com

Fax: 1-832-243-6017