

# CK-19 Polyclonal Antibody

Catalog Number: E-AB-31146



**Note:** Centrifuge before opening to ensure complete recovery of vial contents.

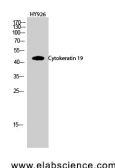
## Description

<b>Reactivity</b>	Human, Mouse, Rat
<b>Immunogen</b>	Synthesized peptide derived from the Internal region of human Cytokeratin 19
<b>Host</b>	Rabbit
<b>Isotype</b>	IgG
<b>Purification</b>	Affinity purification
<b>Conjugation</b>	Unconjugated
<b>Formulation</b>	PBS with 0.02% sodium azide, 0.5% protective protein and 50% glycerol, pH7.4

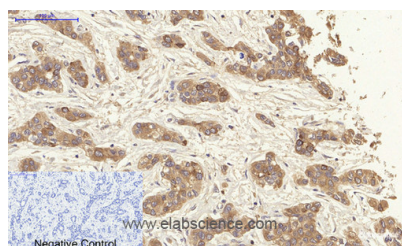
## Applications Recommended Dilution

<b>WB</b>	1:500-1:2000
<b>IHC</b>	1:100-1:300
<b>IF</b>	1:200-1:1000
<b>ELISA</b>	1:10000

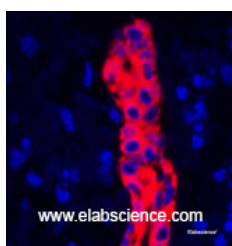
## Data



Western Blot analysis of HY926 cells using CK-19 Polyclonal Antibody at dilution of 1:1000.  
**Observed Mw: 44kDa**  
**Calculated Mw: 44-59kDa**



Immunohistochemistry of paraffin-embedded Human liver cancer tissue using CK-19 Polyclonal Antibody at dilution of 1:200.



Immunofluorescence analysis of Human liver tissue using CK-19 Polyclonal Antibody at dilution of 1:200.

## Preparation & Storage

**Storage** Store at -20°C. Avoid freeze / thaw cycles.

## Background

### For Research Use Only

A Reliable Research Partner in Life Science and Medicine

Toll-free: 1-888-852-8623

Web: [www.elabscience.com](http://www.elabscience.com)

Tel: 1-832-243-6086

Email: [techsupport@elabscience.com](mailto:techsupport@elabscience.com)

Fax: 1-832-243-6017

# CK-19 Polyclonal Antibody

Catalog Number: E-AB-31146



Involved in the organization of myofibers. Together with KRT8, helps to link the contractile apparatus to dystrophin at the costameres of striated muscle.

---

## For Research Use Only

A Reliable Research Partner in Life Science and Medicine

Toll-free: 1-888-852-8623

Tel: 1-832-243-6086

Fax: 1-832-243-6017

Web: [www.elabscience.com](http://www.elabscience.com)

Email: [techsupport@elabscience.com](mailto:techsupport@elabscience.com)