

Recombinant Human Carboxypeptidase A1/CPA1 Protein (His Tag)



Catalog Number:PKSH032168

Note: Centrifuge before opening to ensure complete recovery of vial contents.

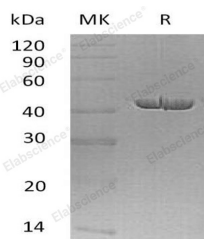
Description

Synonyms	Carboxypeptidase A1;CPA1;CPA
Species	Human
Expression Host	HEK293 Cells
Sequence	Lys17-Tyr419
Accession	AAH05279.1
Calculated Molecular Weight	46.6 kDa
Observed molecular weight	44 kDa
Tag	C-His

Properties

Purity	> 95 % as determined by reducing SDS-PAGE.
Endotoxin	< 1.0 EU per µg of the protein as determined by the LAL method.
Storage	Store at < -20°C, stable for 6 months. Please minimize freeze-thaw cycles.
Shipping	This product is provided as liquid. It is shipped at frozen temperature with blue ice/gel packs. Upon receipt, store it immediately at < - 20°C.
Formulation	Supplied as a 0.2 µm filtered solution of 20mM Tris-HCl, 150mM NaCl, pH 7.5.
Reconstitution	Not Applicable

Data



> 95 % as determined by reducing SDS-PAGE.

Background

Carboxypeptidase A1 (CPA1) is secreted as a pancreatic peptidase that comes from the precursor form of inactive procarboxypeptidase. CPA1 comprises a signal peptide, a pro region and a mature chain, and can be activated after cleavage of the pro peptide. It has a free C-terminal carboxyl group, with the preference of residues with aromatic or branched aliphatic side chains. CPA1 cleaves the C-terminal amide or ester bond of peptides and involves in zymogen inhibition. Three different forms of human pancreatic procarboxypeptidase A have been isolated. In contrast to procarboxypeptidase B which was always secreted by the pancreas as a monomer, procarboxypeptidase A occurs as a monomer and/or associated to one or two functionally different proteins, such as zymogen E.

For Research Use Only

A Reliable Research Partner in Life Science and Medicine

Toll-free: 1-888-852-8623

Web: www.elabscience.com

Tel: 1-832-243-6086

Email: techsupport@elabscience.com

Fax: 1-832-243-6017