

# Recombinant Mouse SerpinA1/A1AT Protein (His Tag)

Catalog Number: PKSM041362



**Note:** Centrifuge before opening to ensure complete recovery of vial contents.

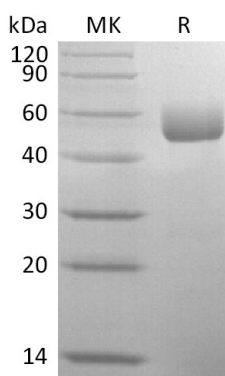
## Description

<b>Species</b>	Mouse
<b>Mol_Mass</b>	44.3 kDa
<b>Accession</b>	AAH11040.1
<b>Bio-activity</b>	Not validated for activity

## Properties

<b>Purity</b>	> 95 % as determined by reducing SDS-PAGE.
<b>Endotoxin</b>	< 1.0 EU per $\mu\text{g}$ of the protein as determined by the LAL method.
<b>Storage</b>	Store at $< -20^{\circ}\text{C}$ , stable for 6 months. Please minimize freeze-thaw cycles.
<b>Shipping</b>	This product is provided as liquid. It is shipped at frozen temperature with blue ice/gel packs. Upon receipt, store it immediately at $< -20^{\circ}\text{C}$ .
<b>Formulation</b>	Supplied as a 0.2 $\mu\text{m}$ filtered solution of 20mM Tris-HCl, 150mM NaCl, pH 8.0.
<b>Reconstitution</b>	Not Applicable

## Data



## Background

Alpha-1-antitrypsin 1-3(SERPIN A1) is a secreted protein and belongs to the serpin family. Serpins bind the protease active site resulting in a major conformational rearrangement that traps the enzyme in a covalent acyl-enzyme intermediate. Mouse SERPIN A1 is a serine protease inhibitor whose targets include elastase, plasmin, thrombin, trypsin, chymotrypsin, and plasminogen activator. Defects in this gene can cause emphysema or liver disease. Several transcript variants encoding the same protein have been found for this gene.

## For Research Use Only

A Reliable Research Partner in Life Science and Medicine  
Tel: 400-999-2100

Email: [techsupport@elabscience.cn](mailto:techsupport@elabscience.cn)

Web: [www.elabscience.cn](http://www.elabscience.cn)

Rev. V3.2