

Recombinant CLPP Monoclonal Antibody

catalog number: **AN301496L**

Note: Centrifuge before opening to ensure complete recovery of vial contents.

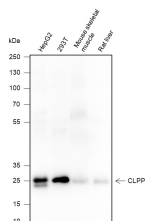
Description

Reactivity	Human;Rat;Mouse
Immunogen	Recombinant human CLPP fragment
Host	Rabbit
Isotype	IgG, κ
Clone	A191
Purification	Protein A purified
Buffer	PBS, 50% glycerol, 0.05% Proclin 300, 0.05% protein protectant.

Applications Recommended Dilution

WB	1:500-1:1000
-----------	--------------

Data



Western Blot with CLPP Monoclonal Antibody at dilution of 1:1000. Lane 1: HepG2, Lane 2: 293T, Lane 3: Mouse skeletal muscle, Lane 4: Rat liver

Observed-MW:26 kDa

Calculated-MW:26 kDa

Preparation & Storage

Storage	Store at -20°C Valid for 12 months. Avoid freeze / thaw cycles.
Shipping	Ice bag

Background

Protease component of the Clp complex that cleaves peptides and various proteins in an ATP-dependent process. Has low peptidase activity in the absence of CLPX. The Clp complex can degrade CSN1S1, CSN2 and CSN3, as well as synthetic peptides (in vitro) and may be responsible for a fairly general and central housekeeping function rather than for the degradation of specific substrates. Cleaves PINK1 in the mitochondrion.

For Research Use Only