

Recombinant Human Collectin-11/COLEC11 Protein (His Tag)



Catalog Number: PKSH032268

Note: Centrifuge before opening to ensure complete recovery of vial contents.

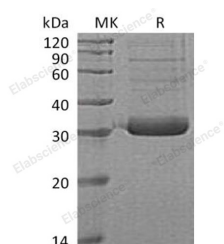
Description

Synonyms	Collectin-11;Collectin Kidney Protein 1;CL-K1;COLEC11
Species	Human
Expression Host	HEK293 Cells
Sequence	Gln26-Met271
Accession	Q9BWP8
Calculated Molecular Weight	27.1 kDa
Observed molecular weight	30-35 kDa
Tag	C-His

Properties

Purity	> 90 % as determined by reducing SDS-PAGE.
Endotoxin	< 1.0 EU per µg of the protein as determined by the LAL method.
Storage	Generally, lyophilized proteins are stable for up to 12 months when stored at -20 to -80°C. Reconstituted protein solution can be stored at 4-8°C for 2-7 days. Aliquots of reconstituted samples are stable at < -20°C for 3 months.
Shipping	This product is provided as lyophilized powder which is shipped with ice packs.
Formulation	Lyophilized from a 0.2 µm filtered solution of 20mM PB, 150mM NaCl, pH7.4. Normally 5 % - 8 % trehalose, mannitol and 0.01% Tween80 are added as protectants before lyophilization. Please refer to the specific buffer information in the printed manual
Reconstitution	Please refer to the printed manual for detailed information.

Data



> 90 % as determined by reducing SDS-PAGE.

Background

Collectin-11 is a secreted protein that belongs to the COLEC10/COLEC11 family. Collectin-11 contains one C-type lectin domain and one collagen-like domain. Collectins play important roles in the innate immune system by binding to carbohydrate antigens on microorganisms, facilitating their recognition and removal. Collectin-11 binds to various sugars including fucose and mannose, but does not bind to glucose, N-acetylglucosamine and N-acetylgalactosamine. It has a higher affinity for fucose compared to mannose. Collectin-11 binds lipopolysaccharides (LPS). It also involved in fundamental development serving as a guidance cue for neural crest cell migration. Defects in Collectin-11 are the cause of 3MC syndrome type 2 (3MC2).

For Research Use Only

A Reliable Research Partner in Life Science and Medicine

Toll-free: 1-888-852-8623

Web: www.elabscience.com

Tel: 1-832-243-6086

Email: techsupport@elabscience.com

Fax: 1-832-243-6017