

UBA52 Polyclonal Antibody

Catalog Number:E-AB-19594



Note: Centrifuge before opening to ensure complete recovery of vial contents.

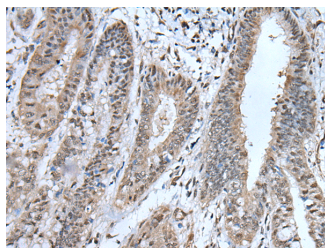
Description

Reactivity	Human, Mouse, Rat
Immunogen	Synthetic peptide of human UBA52
Host	Rabbit
Isotype	IgG
Purification	Antigen affinity purification
Conjugation	Unconjugated
Formulation	PBS with 0.05% NaN ₃ and 40% Glycerol,pH7.4

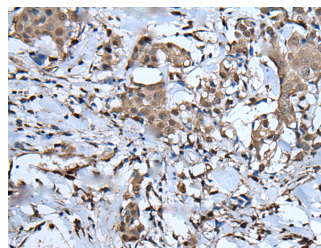
Applications Recommended Dilution

IHC	1:40-1:200
ELISA	1:5000-1:10000

Data



Immunohistochemistry of paraffin-embedded Human liver cancer tissue using UBA52 Polyclonal Antibody at dilution of 1:55(×200)



Immunohistochemistry of paraffin-embedded Human breast cancer tissue using UBA52 Polyclonal Antibody at dilution of 1:55(×200)

Preparation & Storage

Storage Store at -20°C. Avoid freeze / thaw cycles.

Background

Ubiquitin is a highly conserved nuclear and cytoplasmic protein that has a major role in targeting cellular proteins for degradation by the 26S proteasome. It is also involved in the maintenance of chromatin structure, the regulation of gene expression, and the stress response. Ubiquitin is synthesized as a precursor protein consisting of either polyubiquitin chains or a single ubiquitin moiety fused to an unrelated protein. This gene encodes a fusion protein consisting of ubiquitin at the N terminus and ribosomal protein L40 at the C terminus, a C-terminal extension protein (CEP). Multiple processed pseudogenes derived from this gene are present in the genome.

For Research Use Only

A Reliable Research Partner in Life Science and Medicine

Toll-free: 1-888-852-8623

Web: www.elabscience.com

Tel: 1-832-243-6086

Email: techsupport@elabscience.com

Fax: 1-832-243-6017