

LAMTOR1 Polyclonal Antibody

Catalog Number:E-AB-63569



Note: Centrifuge before opening to ensure complete recovery of vial contents.

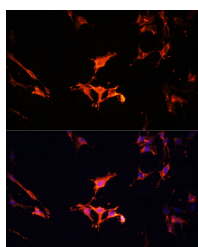
Description

Reactivity	Human,Mouse,Rat
Immunogen	Recombinant fusion protein of human LAMTOR1 (NP_060377.1).
Host	Rabbit
Isotype	IgG
Purification	Affinity purification
Conjugation	Unconjugated
Formulation	PBS with 0.02% sodium azide, 50% glycerol, pH7.3.

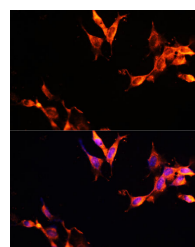
Applications Recommended Dilution

IF	1:50-1:100
-----------	------------

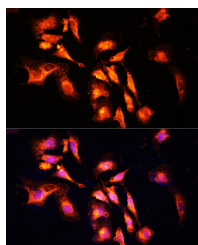
Data



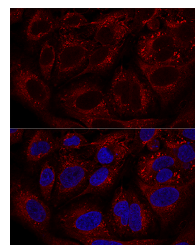
Immunofluorescence analysis of C6 cells using LAMTOR1 Polyclonal Antibody at dilution of 1:100 (40x lens). Blue: DAPI for nuclear staining.



Immunofluorescence analysis of NIH-3T3 cells using LAMTOR1 Polyclonal Antibody at dilution of 1:100 (40x lens). Blue: DAPI for nuclear staining.



Immunofluorescence analysis of U-2 OS cells using LAMTOR1 Polyclonal Antibody at dilution of 1:100 (40x lens). Blue: DAPI for nuclear staining.



Confocal immunofluorescence analysis of U2OS cells using LAMTOR1 Polyclonal Antibody at dilution of 1:100. Blue: DAPI for nuclear staining.

Preparation & Storage

Storage Store at -20°C. Avoid freeze / thaw cycles.

Background

LAMTOR1 (Late Endosomal/Lysosomal Adaptor, MAPK And MTOR Activator 1) is a Protein Coding gene. Diseases associated with LAMTOR1 include Cone-Rod Dystrophy 2. Among its related pathways are Signaling by GPCR and RET signaling. Gene Ontology (GO) annotations related to this gene include guanyl-nucleotide exchange factor activity and protein-containing complex scaffold activity.

For Research Use Only

A Reliable Research Partner in Life Science and Medicine

Toll-free: 1-888-852-8623

Web: www.elabscience.com

Tel: 1-832-243-6086

Email: techsupport@elabscience.com

Fax: 1-832-243-6017