

RPL35 Polyclonal Antibody

Catalog Number: E-AB-19108



Note: Centrifuge before opening to ensure complete recovery of vial contents.

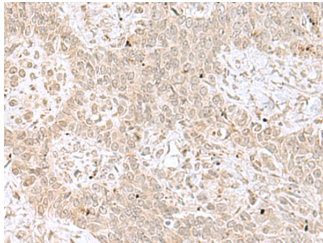
Description

Reactivity	Human, Mouse, Rat
Immunogen	Fusion protein of human RPL35
Host	Rabbit
Isotype	IgG
Purification	Antigen affinity purification
Conjugation	Unconjugated
Formulation	PBS with 0.05% NaN ₃ and 40% Glycerol, pH7.4

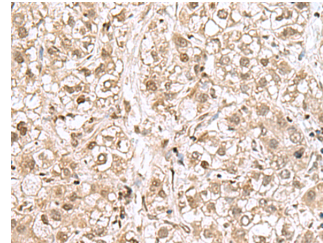
Applications Recommended Dilution

IHC	1:50-1:200
ELISA	1:5000-1:10000

Data



Immunohistochemistry of paraffin-embedded Human ovarian cancer tissue using RPL35 Polyclonal Antibody at dilution of 1:70(×200)



Immunohistochemistry of paraffin-embedded Human liver cancer tissue using RPL35 Polyclonal Antibody at dilution of 1:70(×200)

Preparation & Storage

Storage Store at -20°C. Avoid freeze / thaw cycles.

Background

Ribosomes, the organelles that catalyze protein synthesis, consist of a small 40S subunit and a large 60S subunit. Together these subunits are composed of 4 RNA species and approximately 80 structurally distinct proteins. This gene encodes a ribosomal protein that is a component of the 60S subunit. The protein belongs to the L29P family of ribosomal proteins. It is located in the cytoplasm. As is typical for genes encoding ribosomal proteins, there are multiple processed pseudogenes of this gene dispersed through the genome. RPL35 (Ribosomal Protein L35) is a Protein Coding gene. Diseases associated with RPL35 include Congenital Muscular Dystrophy Due To Lmna Mutation. Among its related pathways are Viral mRNA Translation and rRNA processing in the nucleus and cytosol. GO annotations related to this gene include poly(A) RNA binding and mRNA binding.

For Research Use Only

A Reliable Research Partner in Life Science and Medicine

Toll-free: 1-888-852-8623

Web: www.elabscience.com

Tel: 1-832-243-6086

Email: techsupport@elabscience.com

Fax: 1-832-243-6017