

## CD34 Monoclonal Antibody

catalog number: **AN200011P**

**Note:** Centrifuge before opening to ensure complete recovery of vial contents.

### Description

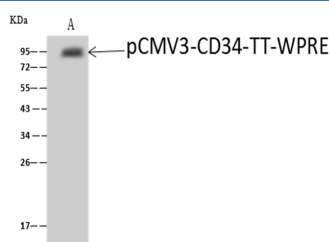
<b>Reactivity</b>	Human
<b>Immunogen</b>	Full length human CD34 expression plasmid
<b>Host</b>	Mouse
<b>Isotype</b>	IgG1
<b>Clone</b>	6C5
<b>Purification</b>	Protein A
<b>Buffer</b>	0.2 µm filtered solution in PBS

### Applications

### Recommended Dilution

<b>WB</b>	1:500-1:2000
<b>IP</b>	1-5 µL/mg of lysate

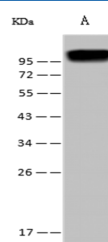
### Data



Immunoprecipitation analysis using 4 µL anti-pCMV3-CD34-TT-WPRE mouse Monoclonal Antibody and 60 µg of Immunomagnetic beads Protein A/G. Western blot was performed from the immunoprecipitate using pCMV3-CD34-TT-WPRE mouse Monoclonal Antibody at a dilution of 1:100. Lane A: 0.5 mg TF-1 Whole Cell Lysate

**Observed-MW: 95 kDa**

**Calculated-MW: 41 kDa**



Western Blot with CD34 Monoclonal Antibody at dilution of 1:500. Lane A: TF-1 Whole Cell Lysate, Lysates/proteins at 30 µg per lane.

**Observed-MW: 95 kDa**

**Calculated-MW: 41 kDa**

### Preparation & Storage

<b>Storage</b>	This antibody can be stored at 2°C-8°C for one month without detectable loss of activity. Antibody products are stable for twelve months from date of receipt when stored at -20°C to -80°C. Preservative-Free. Avoid repeated freeze-thaw cycles.
<b>Shipping</b>	Ice bag

### Background

CD34, also known as gp105-120, is a type I monomeric sialomucin-like glycoprophosphoprotein with an approximate molecular weight of 105-120 kD. Selectively expressed on the majority of hematopoietic stem/progenitor cells, bone marrow stromal cells, capillary endothelial cells, embryonic fibroblasts, and some nervous tissue, CD34 is a commonly used marker to identify human hematopoietic stem/progenitor cells. According to the differential sensitivity to enzymatic cleavage, four groups of epitopes of CD34 have been described. CD34 mediates cell adhesion and lymphocytes homing through binding to L-selectin and E-selectin ligands.

### For Research Use Only