

Recombinant Rat IgG2A Fc/IgG-2a Protein

Catalog Number:PKSR030448



Note: Centrifuge before opening to ensure complete recovery of vial contents.

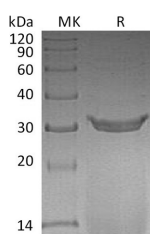
Description

Synonyms	Ig gamma-2A chain C region;Igg-2a
Species	Rat
Expression Host	HEK293 Cells
Sequence	Val98-Lys322
Accession	P20760
Calculated Molecular Weight	35.2 kDa
Observed molecular weight	30-35 kDa
Tag	None

Properties

Purity	> 95 % as determined by reducing SDS-PAGE.
Endotoxin	< 1.0 EU per µg of the protein as determined by the LAL method.
Storage	Generally, lyophilized proteins are stable for up to 12 months when stored at -20 to -80°C. Reconstituted protein solution can be stored at 4-8°C for 2-7 days. Aliquots of reconstituted samples are stable at < -20°C for 3 months.
Shipping	This product is provided as lyophilized powder which is shipped with ice packs.
Formulation	Lyophilized from a 0.2 µm filtered solution of 20mM Tris-HCl, pH 8.5. Normally 5 % - 8 % trehalose, mannitol and 0.01% Tween80 are added as protectants before lyophilization. Please refer to the specific buffer information in the printed manual.
Reconstitution	Please refer to the printed manual for detailed information.

Data



> 95 % as determined by reducing SDS-PAGE.

Background

Immunoglobulin G (IgG) is a type of antibody composed of four peptide chains—two identical heavy chains and two identical light chains arranged in a Y-shape typical of antibody monomers. There are four IgG subclasses (IgG1, 2, 3, and 4) in humans, named in order of their abundance in serum. The IgG2a isotype was able to interact very efficiently with FcγR1, and share approximately 64-78% amino acid sequence identity with IgG1 and IgG2b in the heavy chain constant region domains, CH1, CH2 and CH3, which cause the difference in the interaction with complement, NK and mast cells, induction or inhibition by specific cytokines, and ability to cross the placenta.

For Research Use Only

A Reliable Research Partner in Life Science and Medicine

Toll-free: 1-888-852-8623

Web: www.elabscience.com

Tel: 1-832-243-6086

Email: techsupport@elabscience.com

Fax: 1-832-243-6017