

Recombinant Human Glucagon-like peptide 1/GLP-1 protein (GST tag)



Catalog Number:PDEH100130

Note: Centrifuge before opening to ensure complete recovery of vial contents.

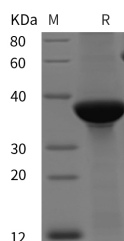
Description

Synonyms	GRPP;OXM;OXY;GLP-1;Incretin hormone;GLP-1(7-37);GLP-1(7-36);GLP-2;Pro-glucagon;Glucagon-like peptide 1
Species	Human
Expression Host	E.coli
Sequence	His 92-Gly 128
Accession	P01275
Calculated Molecular Weight	29.0 kDa
Observed molecular weight	38 kDa
Tag	N-GST

Properties

Purity	> 95 % as determined by reducing SDS-PAGE.
Endotoxin	Please contact us for more information.
Storage	Generally, lyophilized proteins are stable for up to 12 months when stored at -20 to -80°C. Reconstituted protein solution can be stored at 4-8°C for 2-7 days. Aliquots of reconstituted samples are stable at < -20°C for 3 months.
Shipping	This product is provided as lyophilized powder which is shipped with ice packs.
Formulation	Lyophilized from sterile PBS, pH 7.4. Normally 5 % - 8 % trehalose, mannitol and 0.01 % Tween80 are added as protectants before lyophilization. Please refer to the specific buffer information in the printed manual.
Reconstitution	Please refer to the printed manual for detailed information.

Data



> 95 % as determined by reducing SDS-PAGE.

Background

Plays a key role in glucose metabolism and homeostasis. Regulates blood glucose by increasing gluconeogenesis and decreasing glycolysis. A counterregulatory hormone of insulin, raises plasma glucose levels in response to insulin-induced hypoglycemia. Plays an important role in initiating and maintaining hyperglycemic conditions in diabetes.

For Research Use Only

A Reliable Research Partner in Life Science and Medicine

Toll-free: 1-888-852-8623

Web: www.elabscience.com

Tel: 1-832-243-6086

Email: techsupport@elabscience.com

Fax: 1-832-243-6017