

## LAMP2/CD107b Monoclonal Antibody

catalog number: **AN200230P**

**Note:** Centrifuge before opening to ensure complete recovery of vial contents.

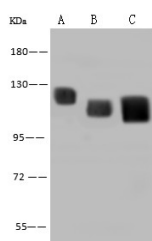
### Description

<b>Reactivity</b>	Human
<b>Immunogen</b>	Recombinant Human LAMP2/CD107b Protein
<b>Host</b>	Mouse
<b>Isotype</b>	IgG1
<b>Clone</b>	5B11
<b>Purification</b>	Protein A
<b>Buffer</b>	0.2 µm filtered solution in PBS

### Applications Recommended Dilution

<b>WB</b>	1:500-1:2000
<b>ICC/IF</b>	1:20-1:100

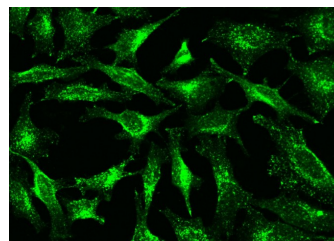
### Data



Western Blot with LAMP2 Monoclonal Antibody at dilution of 1:500. Lane A: HepG2 Whole Cell Lysate, Lane B: Jurkat Whole Cell Lysate, Lane C: HeLa Whole Cell Lysate, Lysates/proteins at 30 µg per lane.

**Observed-MW:100-120 kDa**

**Calculated-MW:45 kDa**



Immunofluorescence analysis of LAMP2 in HeLa cells. Cells were fixed with 4% PFA, permeabilized with 0.1% Triton X-100 in PBS, blocked with 10% serum, and incubated with mouse anti-human LAMP2 monoclonal antibody (dilution ratio 1:60) at 4°C overnight. Then cells were stained with the Alexa Fluor®488-conjugated Goat Anti-mouse IgG secondary antibody (green). Positive staining was localized to Cytoplasm.

### Preparation & Storage

<b>Storage</b>	This antibody can be stored at 2°C-8°C for one month without detectable loss of activity. Antibody products are stable for twelve months from date of receipt when stored at -20°C to -80°C. Preservative-Free. Avoid repeated freeze-thaw cycles.
<b>Shipping</b>	Ice bag

### Background

The protein encoded by this gene is a member of a family of membrane glycoproteins. This glycoprotein provides selectins with carbohydrate ligands. It may play a role in tumor cell metastasis. It may also function in the protection, maintenance, and adhesion of the lysosome. Alternative splicing of this gene results in multiple transcript variants encoding distinct proteins.

### For Research Use Only

Toll-free: 1-888-852-8623  
Web: [www.elabscience.com](http://www.elabscience.com)

Tel: 1-832-243-6086  
Email: [techsupport@elabscience.com](mailto:techsupport@elabscience.com)

Fax: 1-832-243-6017

Rev. V1.0