

## Recombinant EpCAM Monoclonal Antibody

catalog number: **AN300999L**

**Note:** Centrifuge before opening to ensure complete recovery of vial contents.

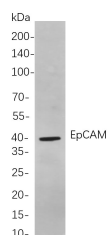
### Description

<b>Reactivity</b>	Human;Mouse;Rat
<b>Immunogen</b>	Recombinant Human EpCAM protein
<b>Host</b>	Rabbit
<b>Isotype</b>	IgG, $\kappa$
<b>Clone</b>	B750
<b>Purification</b>	Protein A
<b>Buffer</b>	PBS, 50% glycerol, 0.05% Proclin 300, 0.05% protein protectant.

### Applications Recommended Dilution

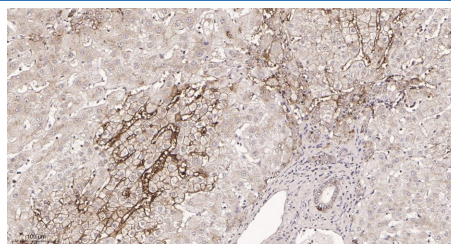
<b>IHC</b>	1:200-1:1000
<b>WB</b>	1:1000-1:5000
<b>IF</b>	1:200-1:1000
<b>ELISA</b>	1:5000-1:20000
<b>IP</b>	1:50-1:200,

### Data

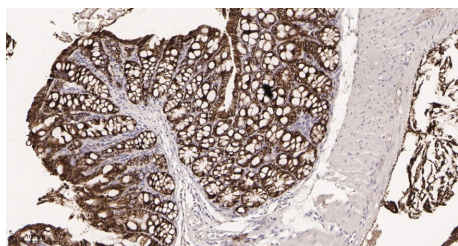


Western Blot with Recombinant EpCAM Monoclonal Antibody at dilution of 1:1000 dilution. Lane A: HCT-116 cells.

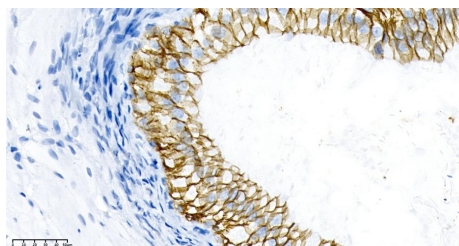
**Observed-MW:40 kDa**  
**Calculated-MW:35 kDa**



Immunohistochemistry of paraffin-embedded human liver tissue using Recombinant EpCAM Monoclonal Antibody at dilution of 1:200.



Immunohistochemistry of paraffin-embedded mouse colon tissue using Recombinant EpCAM Monoclonal Antibody at dilution of 1:200.



Immunohistochemistry of paraffin-embedded rat prostate using Recombinant EpCAM Monoclonal Antibody at dilution of 1:200.

### Preparation & Storage

<b>Storage</b>	Store at -20°C Valid for 12 months. Avoid freeze / thaw cycles.
<b>Shipping</b>	Ice bag

### Background

#### For Research Use Only

Toll-free: 1-888-852-8623  
Web: [www.elabscience.com](http://www.elabscience.com)

Tel: 1-832-243-6086  
Email: [techsupport@elabscience.com](mailto:techsupport@elabscience.com)

Fax: 1-832-243-6017

Rev. V1.2

This gene encodes a carcinoma-associated antigen and is a member of a family that includes at least two type I membrane proteins. This antigen is expressed on most normal epithelial cells and gastrointestinal carcinomas and functions as a homotypic calcium-independent cell adhesion molecule. The antigen is being used as a target for immunotherapy treatment of human carcinomas. Mutations in this gene result in congenital tufting enteropathy.