

CIDEB Polyclonal Antibody

catalog number: E-AB-10667

Note: Centrifuge before opening to ensure complete recovery of vial contents.

Description

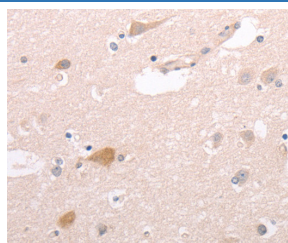
Reactivity	Human;Mouse
Immunogen	Recombinant protein of human CIDEB
Host	Rabbit
Isotype	IgG
Purification	Affinity purification
Conjugation	Unconjugated
buffer	Phosphate buffered solution, pH 7.4, containing 0.05% stabilizer and 50% glycerol.

Applications

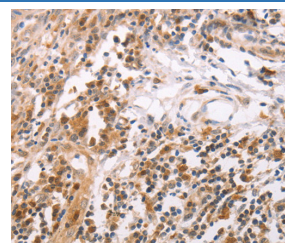
Recommended Dilution

IHC	1:50-1:200
------------	------------

Data



Immunohistochemistry of paraffin-embedded Human brain tissue using CIDEB Polyclonal Antibody at dilution 1:50



Immunohistochemistry of paraffin-embedded Human cervical cancer tissue using CIDEB Polyclonal Antibody at dilution 1:50

Preparation & Storage

Storage	Store at -20°C Valid for 12 months. Avoid freeze / thaw cycles.
Shipping	The product is shipped with ice pack, upon receipt, store it immediately at the temperature recommended.

Background

This protein can activate apoptosis. It is inhibited by DFFB and interacts with DFFA and DFFB. It has high levels of expression in liver and small intestine, and has lower levels of expression in colon, kidney and spleen. CIDEB specifically interacts with VLDL structural protein, apolipoprotein B100 (apoB100), but not with albumin, a PTVC cargo protein. It can interact with COPII components, Sar1 and Sec24.

For Research Use Only