

Recombinant Human NPDC-1/NPDC1 Protein (His Tag)

Catalog Number: PKSH032822

Note: Centrifuge before opening to ensure complete recovery of vial contents.

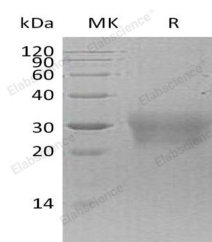
Description

Synonyms	Neural Proliferation Differentiation and Control Protein 1; NPDC-1; NPDC1; RP11-229P13.1; CAB; CAB-1; CAB1
Species	Human
Expression Host	HEK293 Cells
Sequence	Gly35-Asp181
Accession	Q9NQX5
Calculated Molecular Weight	16.5 kDa
Observed molecular weight	28-35 kDa
Tag	C-His

Properties

Purity	> 95 % as determined by reducing SDS-PAGE.
Endotoxin	< 1.0 EU per µg of the protein as determined by the LAL method.
Storage	Generally, lyophilized proteins are stable for up to 12 months when stored at -20 to -80°C. Reconstituted protein solution can be stored at 4-8°C for 2-7 days. Aliquots of reconstituted samples are stable at < -20°C for 3 months.
Shipping	This product is provided as lyophilized powder which is shipped with ice packs.
Formulation	Lyophilized from a 0.2 µm filtered solution of 20mM Tris-HCl, 150mM NaCl, pH 8.0. Normally 5 % - 8 % trehalose, mannitol and 0.01% Tween80 are added as protectants before lyophilization. Please refer to the specific buffer information in the print
Reconstitution	Please refer to the printed manual for detailed information.

Data



> 95 % as determined by reducing SDS-PAGE.

Background

Neural proliferation differentiation and control protein 1 (NPDC1) is a protein that in humans is encoded by the NPDC1 gene. It is a single-pass membrane protein and belongs to the NPDC1/cab-1 family. The protein strongly expressed in adult brain and especially in hippocampus; frontal lobe and temporal lobe. The protein suppresses oncogenic transformation in neural and non-neural cells and down-regulates neural cell proliferation and it might be involved in transcriptional regulation.

For Research Use Only

A Reliable Research Partner in Life Science and Medicine

Toll-free: 1-888-852-8623

Web: www.elabscience.com

Tel: 1-832-243-6086

Email: techsupport@elabscience.com

Fax: 1-832-243-6017